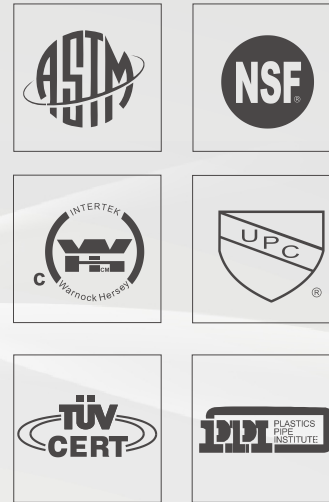


Codes, Listings and Standards

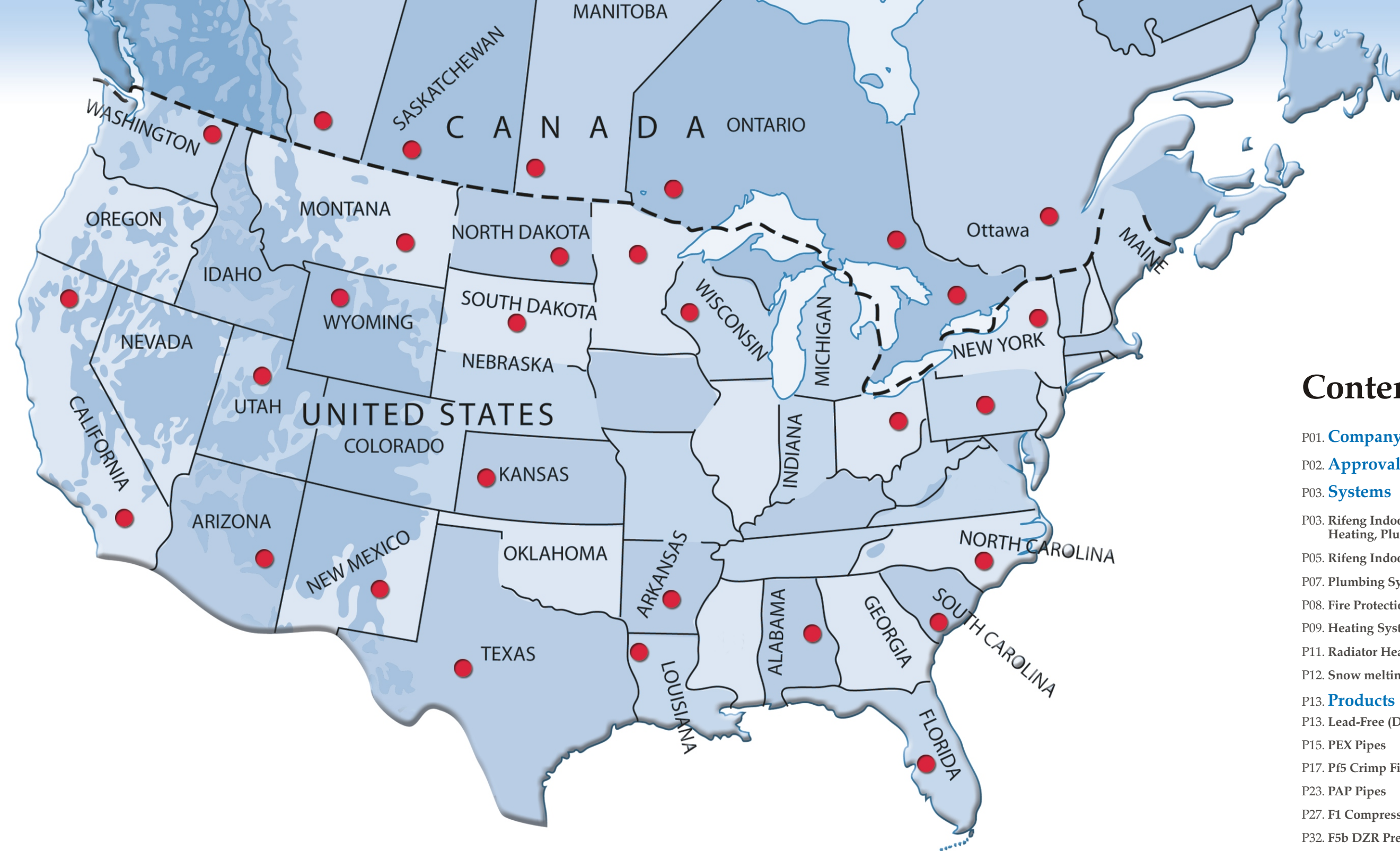
RIFENG systems are manufactured in accordance with American Society for Testing and Materials (ASTM) F1281 for PEX/AL/PEX and F 876 /877 for SDR-9 PEX. They are listed by the National Sanitation Foundation to NSF Standards 14 and 61 for use in both in potable water and radiation systems.

RIFENG potable water system labeled "CI-TD" meets the requirements for use in chlorinated traditional domestic systems.

RIFENG systems carry UPC certification mark, as approved by the International Association of Plumbing and Mechanical Officials (IAPMO). RIFENG systems are also listed by DVGW (Deutsche Vereinigung des Gas- und Wasserfaches)-the German Certifying Institute for Gas and Water Installations. All RIFENG systems labeled with "cNSF for PEX/AL/PEX and WH for PEX" are certified to CSA Standard B137.10 and B137.5.



2011 Systems & Product Catalogue



● our sales

Contents

P01. [Company Profile](#)

P02. [Approvals](#)

P03. [Systems](#)

P03. Rifeng Indoor Piping Systems:
Heating, Plumbing, Fire Protection

P05. Rifeng Indoor Climate Systems

P07. Plumbing System

P08. Fire Protection System

P09. Heating System

P11. Radiator Heating System

P12. Snow melting System

P13. [Products](#)

P13. Lead-Free (DZR) Brass Products

P15. PEX Pipes

P17. Pf5 Crimp Fittings

P23. PAP Pipes

P27. F1 Compression Fittings

P32. F5b DZR Press Fittings

P39. [Manifolds](#)

P40. Manifolds for Water Supply

P41. Manifolds-FN5C Manifolds

P43. Manifolds-FN15 Manifolds

P45. Accessories for Manifolds

P47. [Valves](#)

P58. [Global References](#)

P59. [Rifeng Product Application Cautions](#)

Company Profile



Rifeng provides advanced piping solutions for Indoor Climate, Plumbing and Gas Transportations in all building types, from residential house to industrial and commercial buildings.

Rifeng is at the forefront of piping solution innovation, providing integrated systems from pipes and fittings to tools and accessories. Everything you need is designed, produced and supported by the same company. With over 15 years' experiences in thermoplastic piping, you can count on Rifeng to deliver quality.

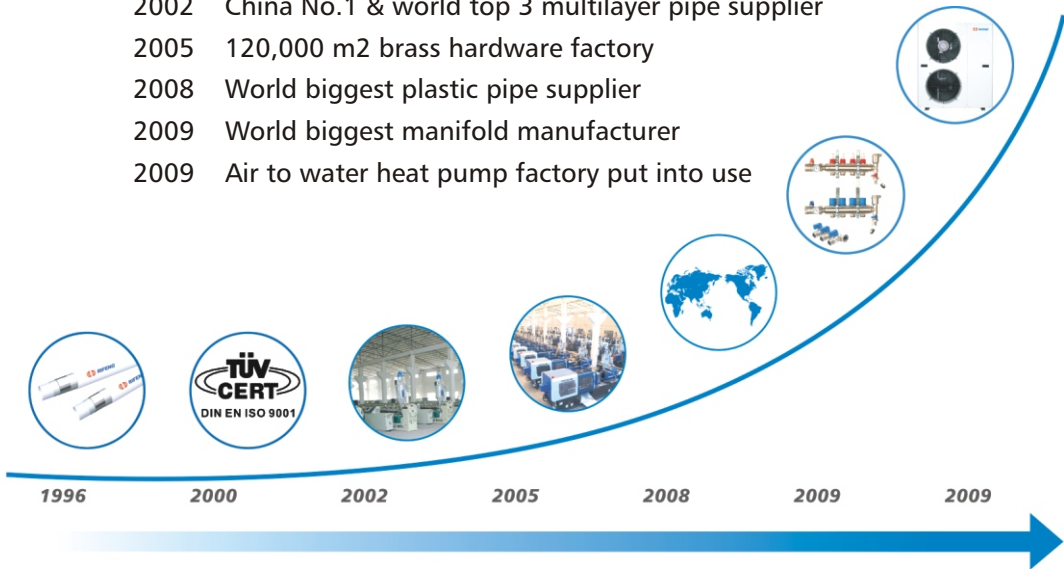
Rifeng endeavors to provide our customers with diversity in choices and satisfaction in quality. By integrating our excellent R&D capacity and production scale, we are able to provide a range of services from OEM to tailored services for niche markets.

Mission Statement

With our unanimous effort in innovation, through our professional services, and by closely co-operating with our global strategic partners, We, Rifeng, are devoted to provide you with a series of environmentally friendly and reliable plumbing and indoor climate systems.

Milestone

- 1996 First multilayer pipe producer in China
- 2000 ISO 9001 & ISO 14001 certified
- 2002 China No.1 & world top 3 multilayer pipe supplier
- 2005 120,000 m2 brass hardware factory
- 2008 World biggest plastic pipe supplier
- 2009 World biggest manifold manufacturer
- 2009 Air to water heat pump factory put into use



Approvals



Rifeng Indoor Piping Systems: Heating, Plumbing, Fire Protection

Rifeng Indoor Piping Systems bring you multi-function services with considerate customer care. Indoor climate system is environmentally, economical and reliable solution for warming up your house. Plumbing and Fire

Protection systems are designed with advantages of easy installation and effective water distribution. Rifeng provides you with reliable components for each system from heat source, control units to pipes and fittings.

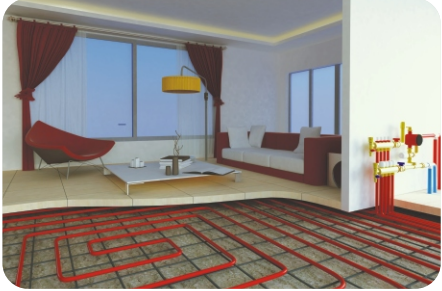
Radiator Heating System




Rifeng Radiator Heating System, used in combination with the system components from the basic range offers the possibility of installing a complete system- right from the heating boiler to the most distant radiator.

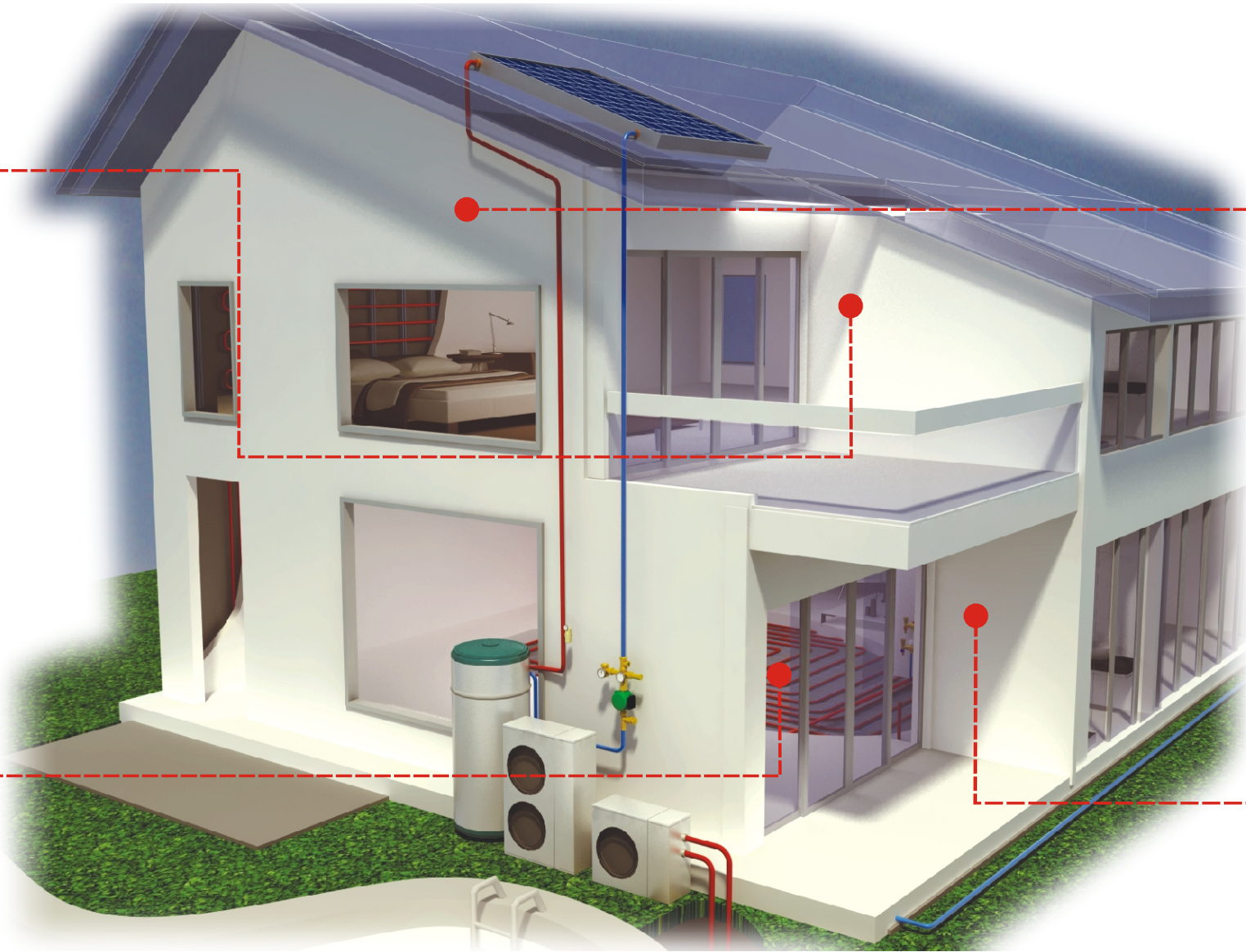


Floor Heating System

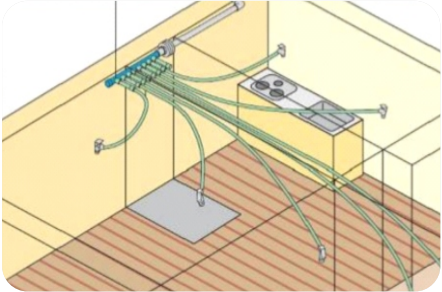


Imagine your body surrounded by a cosy warmth that radiates up from the floor. Underfloor heating turns the floor into a large, gentle radiator a warm, friendly surface that warms your body and the objects in the room.






Fire Protection System



Rifeng Fire Protection System is logically designed to combine the plumbing system with traditional fire sprinkler installation. It can reduced labor cost and installation time while providing safety and reliability for homeowners.



Plumbing System

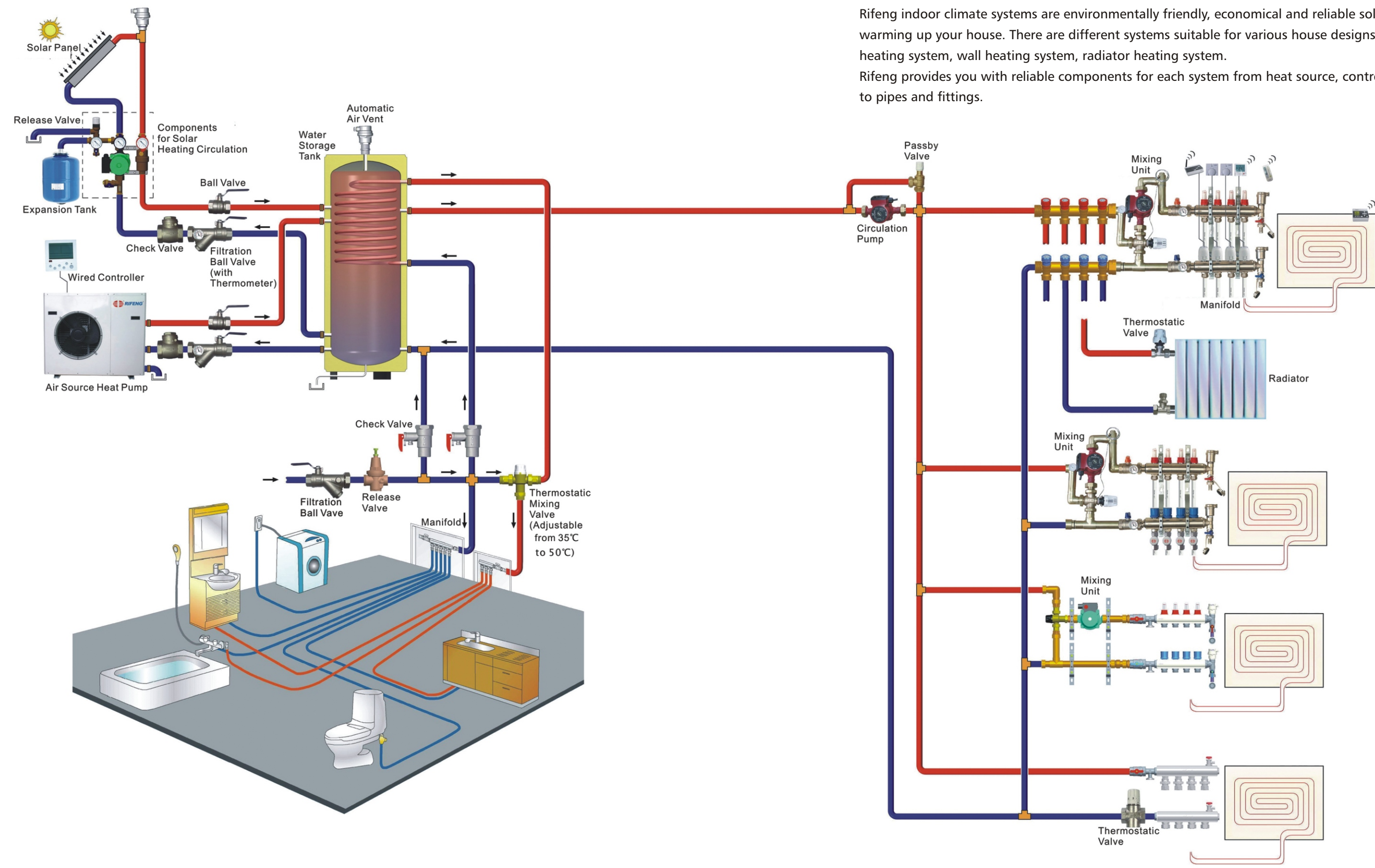


Rifeng plumbing system is an integration of durable pipes, fittings and manifolds. Easy installation with less hidden fittings makes the system stable and secure.



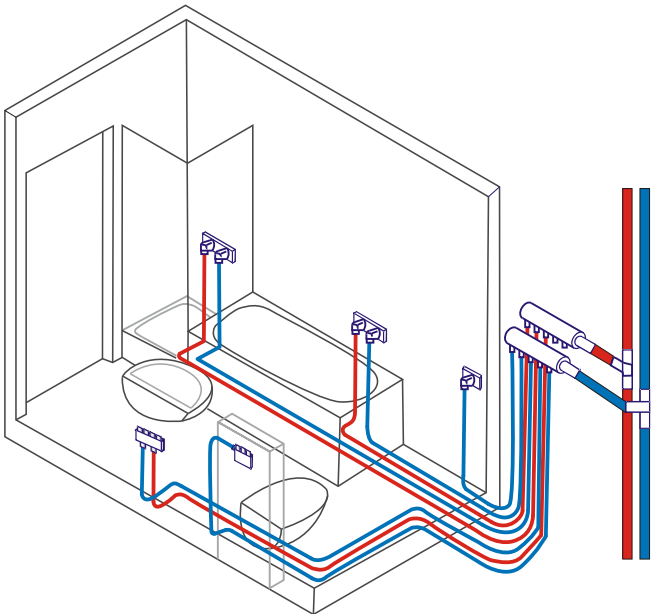
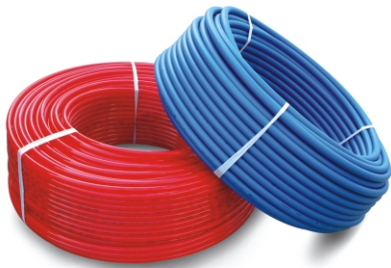
Rifeng Indoor Climate Systems

Rifeng indoor climate systems are environmentally friendly, economical and reliable solutions for warming up your house. There are different systems suitable for various house designs: floor heating system, wall heating system, radiator heating system. Rifeng provides you with reliable components for each system from heat source, control units to pipes and fittings.



Plumbing System

The Rifeng plumbing system is an integration of durable and flexible pipes, brass fittings and manifolds. As a result of continuous research and development for over ten years, Rifeng plumbing system has met the performance standards in seventeen countries, and is being used all over the world.

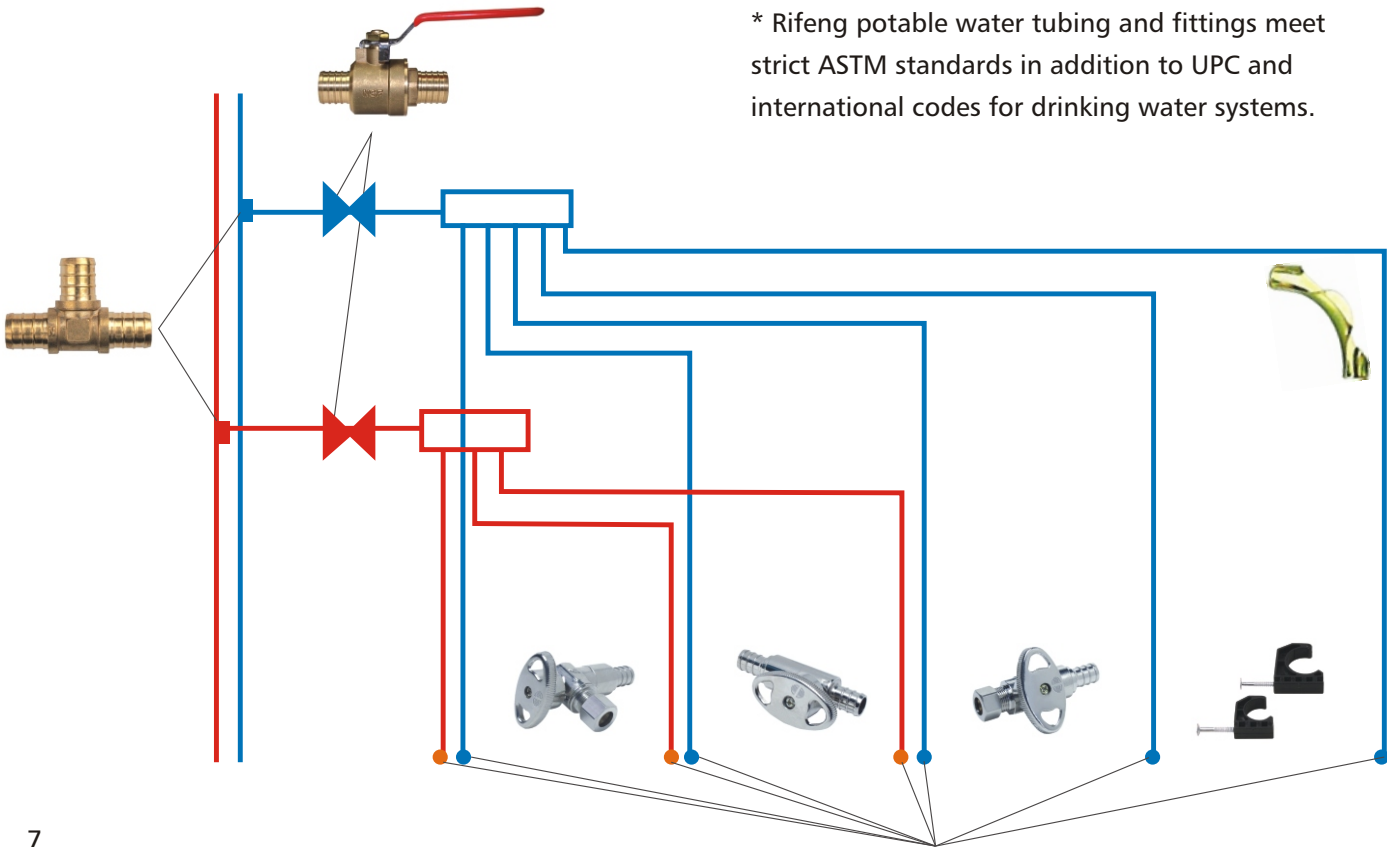


* Rifeng pipe is hygienic and corrosion free, thus the growth of microorganism and Contamination to water can be avoided.

* The smooth inner of Rifeng pipes inhibits deposit accumulation, leading up to 30% more flowing than metal pipes, minimizes the "water-hammer" and effectively eliminates micro-organism breeding in your family's water circulation.

* Rifeng plumbing system is uncomplicated and easy to handle: cutting and joining without special tools. Flexible pipes and fewer fittings save on installation time and labour costs.

* Rifeng potable water tubing and fittings meet strict ASTM standards in addition to UPC and international codes for drinking water systems.



Fire Protection System

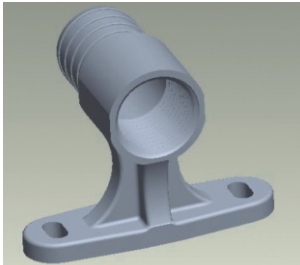
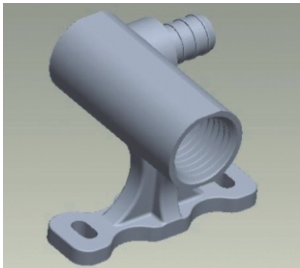
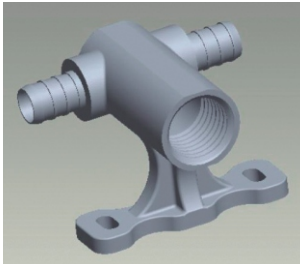
Rifeng Fire Protection System is logically designed to integrate sprinklers with a home's plumbing system into one multipurpose solution. Thanks to the perfect qualified pipe, fitting and the sprinkler, you can rely on our watertight connection and durable system.

* Safe and durable

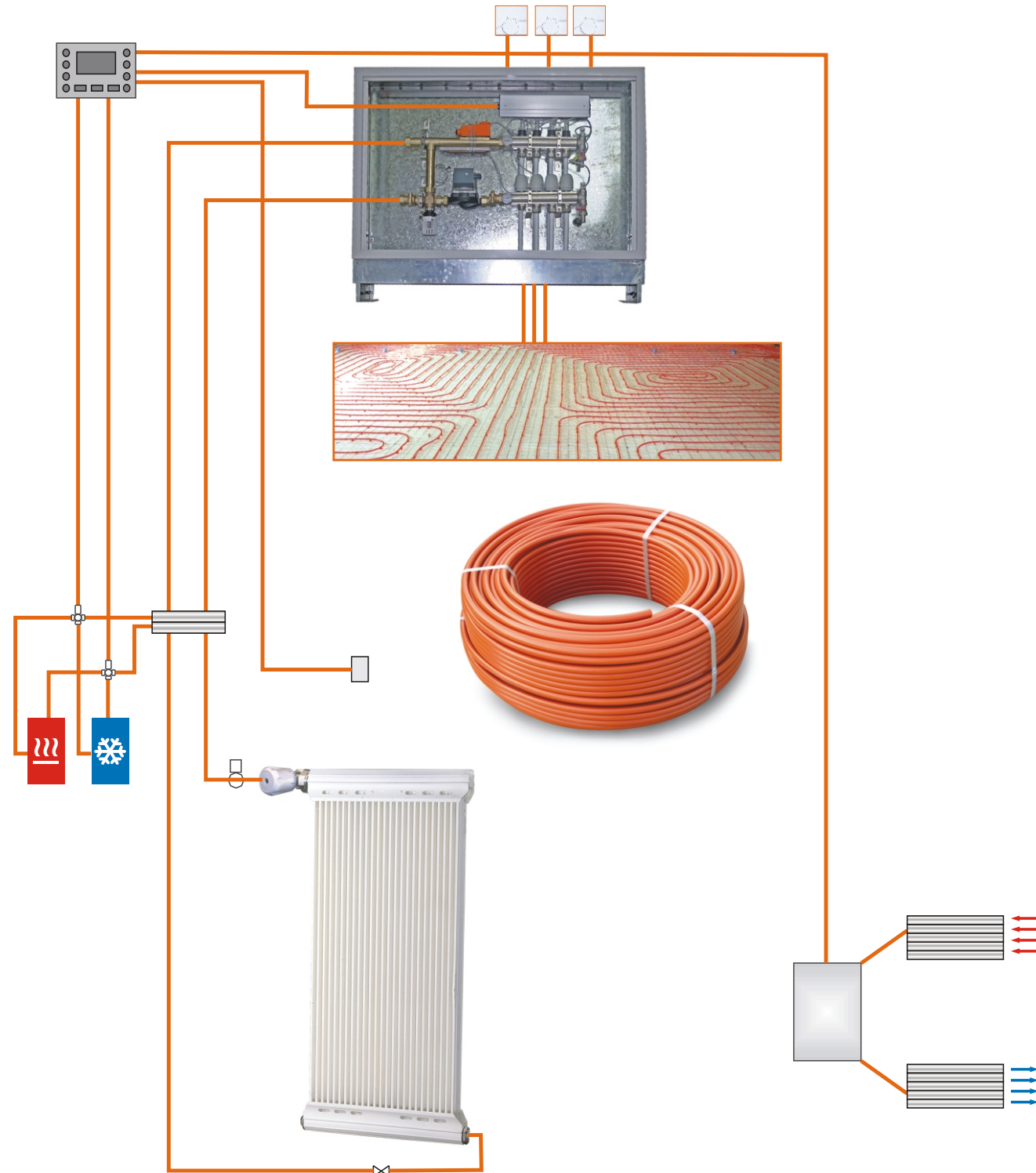
With the smoke detector and sprinkler, the system improves the protection against life loss and property damage. The survival rate can be increased to 97%. Our PEX pipes can be bent gently to minimize the use of fittings. No joining decreases the possibility of leakage greatly. Additionally, the circulated fresh water eliminates some historical problems associated with other systems, such as stagnant water and corrosion.

* Simple and cost-effective

Our system combines with the building's plumbing system, and uses the same PEX pipes and fittings. Both of the systems can be installed at the same time. Installation time and required labor can be reduced greatly. In addition, homeowners in most areas can decrease the insurance rate by installing a fire protection system.

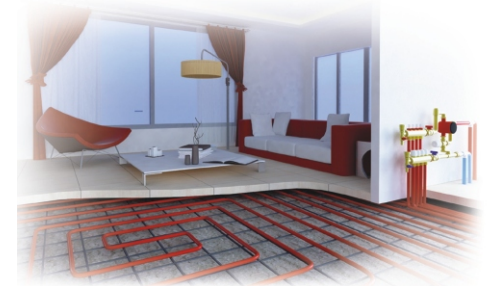


Heating System



Rifeng Underfloor Heating System-the Natural Choice

Imagine your body surrounded by a cosy warmth that radiates up from the floor. Underfloor heating turns the floor into a large, gentle radiator a warm, friendly surface that warms your body and the objects in the room. Underfloor heating warms where it is needed: warm feet and cool head-just as the human body requires. It's not wasted up near the ceiling or lost to the outdoors whenever a window or door is opened. Underfloor heating system has ceased to be luxury, but are nowadays a convenience that you can confidently take for granted.



A Complete System Built From Only The Best Components

Rifeng Underfloor Heating is a complete system. It includes manifolds for distribution, pipes are coiled for easy handling, room thermostats for control of the room temperature and tools for installation. We make sure that every single component in our underfloor heating system is designed and produced to the same uncompromising standards. This is proven by our numerous certificates for quality and environmental friendliness.

* More style and space:

Being installed in wall or under floor, Rifeng heating & cooling system endows people with more space and freedom in decoration.

* Healthier and safer environment:

Less airborne dust, carpet fibre and allergen usually caused by conventional air-conditioning systems creates a cleaning and healthier environment.

* Lower operating costs:

Rifeng heating system saves about 20%-30% in energy use versus conventional systems.

* More comfortable:

Human comfort level is increased considerably by long waved horizontal/vertical radiant heat/cool produced by Rifeng system.



Radiator Heating System

Rifeng radiator system uses pipes to deliver the water heated by the boiler through manifolds to the radiators, which give off heat and warm the room. Cool water is returned from the manifolds to the boiler to be heated again.

Rifeng pipes can be easily bent and keep its shape during installation and require fewer joints. Therefore, the installation is fast and potential leak points are reduced. Our radiator system is quiet and provides even heat that is clean and dust-free. In addition, control and speed of response are the key features of our radiator heating system. Each radiator is equipped with a thermostatic valve that can adjust the individual radiator heat output to the desired room temperature.

Advantages

Perfectly matching combination of Rifeng Multilayer pipes, fittings, accessories and tools

Exchangeable pipe-in-pipe system providing peace of mind for drilling accidents

Absolutely corrosion resistant

Manifold and/or tee installations possible, one or two pipe installation

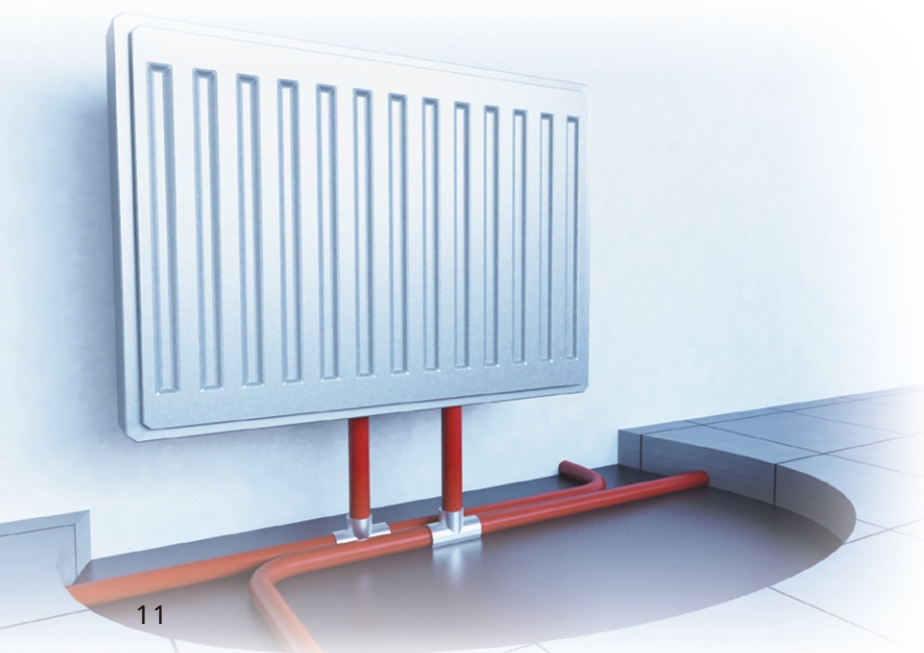
Low heat expansion of the pipe

Mutual compatibility of all parts of the Rifeng system

Radiator connections for all common types of radiator

Connection possible to all types of installation

Compatible with anti-freeze



Snow melting System

Imagine getting up after a strong snowstorm and finding the driveway is magically clear, then running with your kids on the sidewalk freely and safely. What a wonderful winter!

It will come true after installing RIFENG snow melting system! Let's say goodbye to the snow shovels, plows, blowers and salt.

Rifeng snow melting system takes advantage of a warm water/ anti-freeze solution circulating through plastic tubing underneath the pavement to melt snow and ice for whole winter. It is ideal for residential, commercial and industrial applications with convenience, safety and less maintenance.

* Convenient and relaxed

Free from the worry about the snow blocking your work and being your burden. RIFENG snow melting system offers you a clear and dry way. Enjoy a clean winter without shoveling!

* Reliable and safe

A snow-free step, ramp, packing lot or driveway can reduce the risk of slip, fall and auto accidents.

* Environment protection

The environment will be more beautiful because the pavement will not be damaged by snowplows, landscaping and concrete will not be eroded by salt/ melting chemicals.



Lead-Free(DZR)Brass Products

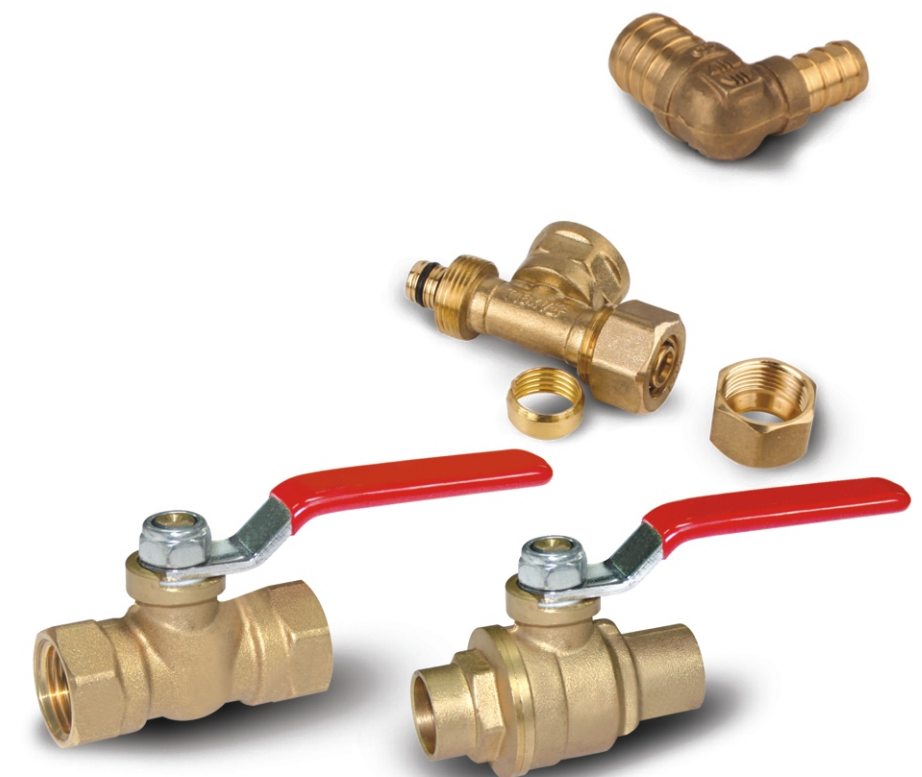
Lead-Free (DZR) Brass Products

Lead is a toxic metal that may cause a range of health effects, from behavioral problems and learning disabilities, to seizures and death. This poisonous substance can enter drinking water from plumbing materials. New lead-free legislation in California and Vermont are leading the country to require stricter lead-free laws for potable water systems. As according to California Health and Safety Code AB 1953 and Vermont S.152, any product with the weighted average lead content of the wetted surface area should be no more than 0.25%.

To provide customers with environmental friendly and reliable products, Rifeng offer a comprehensive line of lead free pipes, fittings and valves that complies to new lead-free legislation. To ensure more reliable product, Rifeng Lead free DZR brass products is below 0.09%, far below the AB1953 requirement.

Features and Benefit:

- * Lead-free & environmentally friendly
- * Excellent de-zincification corrosion resistance
- * Good machinability
- * Outstanding cracking resistance
- * Lower chemical reactions with acidic or alkaline water





PEX Pipes

Rifeng PEX non barrier pipes

Manufactured with the cross-linked polyethylene, Rifeng PEX pipes boost more elaborated polyethylene performances without losing the excellent properties of thermoplastics. Offering excellent corrosion resistance, incredible flexibility and unusual toughness, our PEX pipes allows fastest and easiest installation.

Rifeng PEX barrier pipes

With the same properties as PEX non barrier pipes, Rifeng PEX barrier pipes keeps oxygen and other elements from infiltrating and corrupting the key mechanical components in heating system such as keeping boiler from rusting. It is advisable to use PEX pipes with EVOH in heating system.

Rifeng Corrugated Pipes

Corrugated PEX pipes protect Rifeng PEX pipes that run through walls or ceilings, and offer an easy removal and replacement of pipes if required. The corrugated pipes in red or blue are made of polyethylene.

PEX Pipes

Available in four colors: red, blue, white and transparent.



PEX-b Tubing with EVOH



	Specification	Length
Coils	1/8"	250ft/300ft/500ft/1000ft
	1/4"	250ft/300ft/500ft/1000ft
	3/8"	250ft/300ft/500ft/1000ft
	1/2"	100ft/250ft/300ft/500ft/1000ft
	5/8"	300ft/500ft/1000ft
	3/4"	100ft/250ft/300ft/500ft/1000ft
	1"	100ft/300ft/500ft

PEX-b Tubing



	Specification	Length
Coils	1/8"	250ft/300ft/500ft/1000ft
	1/4"	250ft/300ft/500ft/1000ft
	3/8"	250ft/300ft/500ft/1000ft
	1/2"	100ft/250ft/300ft/500ft/1000ft
	5/8"	300ft/500ft/1000ft
	3/4"	100ft/250ft/300ft/500ft/1000ft
	1"	100ft/300ft/500ft
	1 1/4"	100ft/300ft



Sticks	3/8"	20ft
	1/2"	20ft
	5/8"	20ft
	3/4"	20ft
	1"	20ft



PF5 Crimp Fittings

PF5 Crimp Fittings

PF5 crimp fittings are used in plumbing system, heating system and fire protection system. They are hot-forged for superior durability and strength. Pf5 crimp fittings are list by NSF and IAPMO to be in compliant to the Uniform Plumbing Code, and meet the performance requirements of ASTM F1807, CSA B 137.5. Installation is easy with RIFENG tools.

Couplings

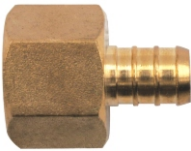
PF5a couplings connect PEX pipes to PEX pipes in size indicated.
Note: Crimp rings sold separately



Specification	pcs/ctn
PF5-S3/8*3/8	2304
PF5-S1/2*1/2	1232
PF5-S5/8*5/8	768
PF5-S3/4*3/4	720
PF5-S1*1	320
PF5-S1*3/4	576
PF5-S3/4*1/2	1120

Female NPT Adapters

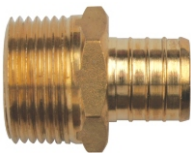
PF5a female NPT adapters connect PEX pipes to female NPT threads.
Note:Crimp rings sold separately



Specification	pcs/ctn
PF5-S1/2*1/2F	384
PF5-S1/2*3/4F	336
PF5-S3/4*3/4F	336
PF5-S1*1F	192

Male NPT Adapters

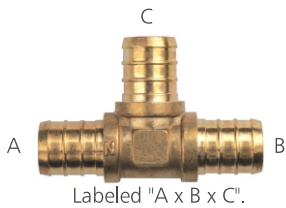
PF5a male NPT adapters connect PEX pipes to male NPT threads.
Note: Crimp rings sold separately



Specification	pcs/ctn
PF5-S1/2*1/2M	672
PF5-S1/2*3/4M	300
PF5-S3/4*1/2M	384
PF5-S3/4*3/4M	300
PF5-S1*3/4M	240
PF5-S1*1M	150

Reducing Tees

PF5a reducing tees make directional connections for PEX pipes in size indicated.
Note: Crimp rings sold separately

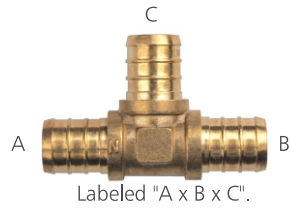


Specification	pcs/ctn
PF5-T1/2*1/2*3/4	256
PF5-T3/4*3/4*1/2	256
PF5-T3/4*1/2*3/4	256
PF5-T1*3/4*1	150
PF5-T1/2*3/4*1/2	256
PF5-T3/4*3/4*1	120
PF5-T1*3/4*3/4	192
PF5-T1*1*1/2	168
PF5-T1*1*3/4	144

PF5 Crimp Fittings

Tees

PF5a tees make directional connections for PEX pipes in size indicated.
Note: Crimp rings sold separately



Specification	pcs/ctn
PF5-T1/2*1/2*1/2	448
PF5-T3/4*3/4*3/4	256
PF5-T1*1*1	144

Female NPT Elbows

PF5a female NPT elbows make 90° connections between PEX pipes and female NPT threads.
Note:Crimp rings sold separately



Specification	pcs/ctn
PF5-L1/2*1/2F	288
PF5-L1*1F	120

Elbows

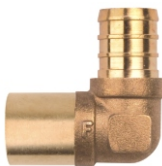
PF5a elbows make 90° connections between PEX pipes in size indicated.
Note:Crimp rings sold separately



Specification	pcs/ctn
PF5-L1/2*1/2	640
PF5-L3/4*3/4	256

Male Sweat Elbows

PF5a male sweat elbows make 90° connections between PEX pipes and copper pipes in size indicated.
Note: Crimp rings sold separately



Specification	pcs/ctn
PF5-L1/2*3/4 CU	240
PF5-L3/4*3/4 CU	240

Female Sweat Elbows

PF5a female sweat elbows make 90° connections between PEX pipes and copper pipes in size indicated.
Note: Crimp rings sold separately



Specification	pcs/ctn
PF5-L1/2*3/4 CUF	320
PF5-L3/4*3/4 CUF	250

Male Sweat Adapters

PF5a male sweat adapters connect PEX pipes to copper pipes in size indicated.
Note: Crimp rings sold separately



Specification	pcs/ctn
PF5-S1/2*1/2 CUM	1120
PF5-S3/4*3/4 CUM	525
PF5-S1x1 CUM	240

Female Sweat Adapters

PF5a female sweat adapters connect PEX pipes to copper pipes in size indicated.
Note: Crimp rings sold separately



Specification	pcs/ctn
PF5-S1/2*3/4 CUF	320
PF5-S1/2*1/2 CUF	1120
PF5-S3/4*3/4 CUF	500
PF5-S1*1 CUF	240
PF5-S5/8*3/4 CUF	240

Drop Ear Elbows

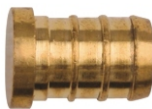
PF5a drop ear elbows make 90° connections between PEX pipes and female NPT threads.
Note: Crimp rings sold separately



Specification	pcs/ctn
PF5*L1/2*1/2F(Z)	160

Plugs

PF5a plugs terminate PEX pipes temporarily or permanently.
Note: Crimp rings sold separately



Specification	pcs/ctn
PF5-D1/2	1920
PF5-D3/4	1280

Crimp Rings

Crimp rings offer a easy connection to PEX pips. Slide one crimp ring over pipes and crimp into place with the crimp tool.
Note:Crimp rings sold separately



Specification	pcs/ctn
PF5-3/8 Ring	4000
PF5-1/2 Ring	3000
PF5-5/8 Ring	2000
PF5-3/4 Ring	1800
PF5-1 Ring	900

Tools and Accessories

Pipe Cutter

Economical pipe cutters provide effective and easy pipe cut†



Specification	pcs/ctn
GJ2-2	50

Manual Pressing Tools for crimp ring

Manual pressing tools ensure a secure connection. Interchangeable crimping jaws of size 3/8", 1/2", and 3/4" are available.

Manual pressing tools ensure a secure connection. Interchangeable crimping jaws of size 1" and 1 1/4" are available.



Specification	pcs/ctn
SYQ2-3/8~3/4	1
SYQ2-1~1 1/4	1

PEX Bends

PEX bends support bended make. 90° bends for PEX pipes without elbows.



Specification	pcs/ctn
WK-1/2"	240
WK-5/8"	150
WK-3/4"	90
WK-1"	60

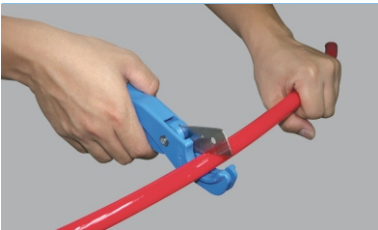
Clips

Clips are used to fasten PEX pipes to wood subfloors, joists or in joist cavities.



Specification	pcs/ctn
PEX KM2-1/2	2400
PEX KM2-3/4	2000

PF5 Installation Instruction



Step 1: Cutting the pipe

Cut the pipe vertically by pex pipe cutter. Make sure to cut it quickly and precisely.



Step 2: Selecting fitting and jaw

Choose the right size of fitting and jaw of the crimping tool.



Step 3: Sleeving

Put the copper crimp ring over the pipe at the open end. Later, insert the fitting body into the pex pipe until the shoulder of the fitting reach the pex pipe, make sure the insert is completely inside the pipe, and the contact between fitting and pipe is clean and free of impurity.



Step 4: Pressing

Open the crimping tool and put the fitting into the jaw. Press the jaw until it closes completely. While pressing, make sure the crimping jaw is vertical to the pipe, the pressing contact must be free of impurity.



Step 5: Checking

Use the GO/NO GO gauge to check whether the pressing is completed. If the crimp ring slides into the "GO" slot, but stops at the shoulder in the "GO" slot, then the pressing is acceptable.



PEX-AL-PEX Pipes

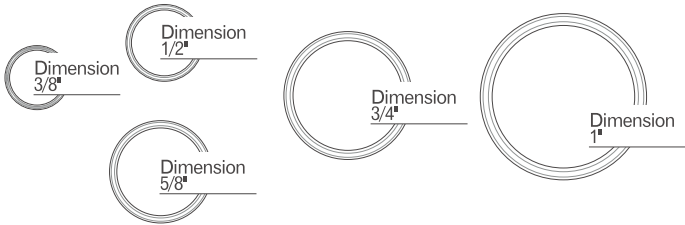
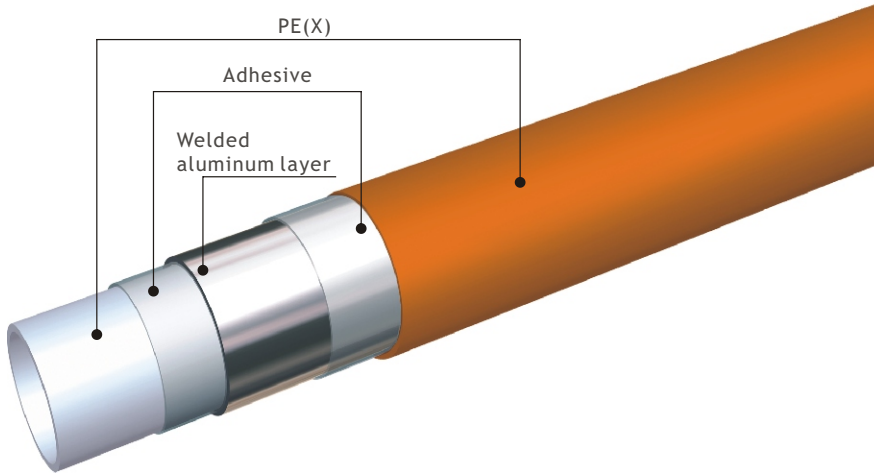
PEX-AL-PEX Pipes

Technical structure Pre-insulated pipes

Rifeng pipe is five-layer composite pipe that combines the advantages of a metal and plastic pipe and eliminates the disadvantages of both materials at the same time. The aluminum core is absolutely diffusion tight; it reliably prevents oxygen/gases from permeating into pipe. It compensates and reduces snap-back forces and heat expansion with changes of temperature.

Overlapped welded pipe is co-extruded with one step with perfect adhesive between inner layer and aluminum, high and stable pressure resistance, of which welding style is ultrasonic.

The main purpose of pre-insulated tubing is to prevent heat passage from steam or hot-water pipes to the surrounding air or from the surrounding air to cold-water lines. In some cold regions, pre-insulated tubing is able to prevent water from freezing in a pipe, especially when the pipes are outside a building. Additionally, the outer jacket can subdue noise made by the flow of water inside pipes.



Example: B1-12-16
Outer diameter 16mm
Inner diameter 12mm
Hot water pipe

PEX-AL-PEX Pipes

Technical Information

Thermal & pressure resistant

Specification		Minimum burst pressure (MPa)	Min pipe ring strength (N)	Long-term hydrostatic strength(MPa)	Working temperature(°F)	Working pressure(Psi)
(mm)	(inch)				pipe B1	pipe B1
0912	3/8	7.0	2300	2.7		
1216	1/2	6.0	2300	2.7		
1620	5/8	5.0	2500	2.7	180°F	125psi
2025	3/4	4.0	2500	2.3		
2632	1	4.0	2500	2.1		

Note: 1Mpa=145psi=10bar table 1

Absolutely diffusion tight

The aluminium core is continuously overlapped or butt welded and prevents oxygen/gases from permeating into the pipe. Consequently, the corrosion of metallic installation components is avoided.

Corrosion resistant

The smooth inner and outer plastic layers hold water at bay-preventing deposit accumulation and corrosion. At normal temperature, it can withstand all kinds of acid, alkali and salt solution.

Better earthquake resistance of structure

Shaken but not stirred, Rifeng pipes are flexible. This not only means that they are easy to install but they are also reliable-especially when an earthquake strikes.

Hydraulic Function

The inner roughness of Rifeng pipe is 0.007mm. The inner is very smooth that makes Rifeng pipe ideal for liquid (like water) supply.

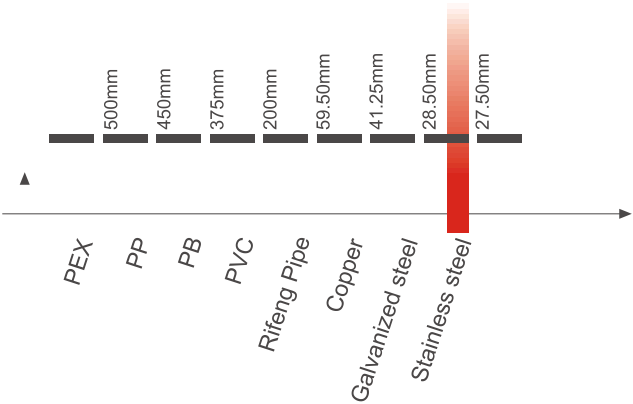
Low thermal conductivity

0.45W/m.k, about 1/100 of the steel pipes, more suitable for hot water supply than metal pipe.

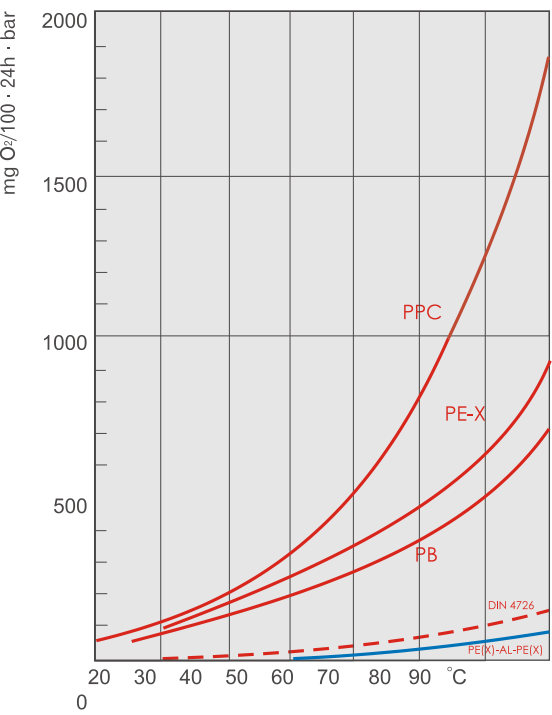
Low heat expansion(see graph)

25x10⁻⁶m/m.k, only 1/8 of polyethylene pipe's, almost same to aluminium pipe's. The permanent bond of plastic layers to the aluminium considerably reduces heat expansion.

50 meters pipe, expansion at 50°C temperature difference.



Oxygen-permeability of various kinds of plastic pipes



Advantages comparison between Rifeng pipe and other pipes

Pipes	RIFENG Pipe	All-plastic pipe	Galvanized pipe
Projects			
materials	PEX/AL/PEX	PPC or PE or PB or UPVC etc	steel
self weight	light	light	heavy
packing	coil	coil or straight	straight
cutting	easiest	easy	difficult
connection	easy	easier or easy	difficult
shock-resistance	strong	general	strong
pressure-resistance	high	general	high
corrosion-resistance	high	high	bad
bending	easy but never spring back	easy but spring back	no bending
permeability	no	oxygen diffusion	no
size stability	high	lower	high
installing	easy & no contamination	easy	difficult & contamination
burning-resistance	good	bad	best
service life	long	longer or long	short
hygiene	best	good	bad



F1 Compression Fittings

F1 Compression Fittings

F1 compression fittings are ideal for heating system. They are hot-forged for superior durability and strength. F1 compression fittings are listed by NSF and IAPMO to be in compliant to the Uniform Plumbing Code, and meet the performance requirements of ASTM F1281.

- * Specially designed for Rifeng PEX/AL/PEX pipes
- * Artistic design with high-pressure and corrosion resistance
- * EPDM O-ring and liquid leak-proof
- * Easily installed and disassembled with spanner
- * Recycled to save resource.

Couplings

F1 couplings make connection between PEX/AL/PEX pipes in size indicated.



Specification	pcs/ctn
F1-S3/8*3/8 A	288
F1-S1/2*1/2 A	192
F1-S5/8*5/8 A	160
F1-S3/4*3/4 A	112
F1-S1*1 A	96
F1-S1*3/4 A	96

Male NPT Adapters

F1 male NPT adapters connect PEX/AL/PEX pipes to male NPT threads.



Specification	pcs/ctn
F1-S1/2*1/2M A	288
F1-S1/2*3/4M A	200
F1-S5/8*1/2M A	192
F1-S5/8*3/4M A	192
F1-S3/4*3/4M A	128
F1-S1*1M A	108

Female NPT Adapters

F1 female NPT adapters connect PEX/AL/PEX pipes to female NPT threads.



Specification	pcs/ctn
F1-S1/2*3/4F A	200
F1-S3/4*3/4F A	160
F1-S1*1F A	108

F1 Compression Fittings

Elbows

F1 elbows make 90° connections between PEX/AL/PEX pipes in size indicated.



Specification	pcs/ctn
F1-L1/2*1/2 A	120
F1-L5/8*5/8 A	120
F1-L3/4*3/4 A	80
F1-L1*1 A	48
F1-L5/8*1/2 A	120
F1-L3/4*1/2 A	96
F1-L1*3/4 A	60

Drop Ear Elbows

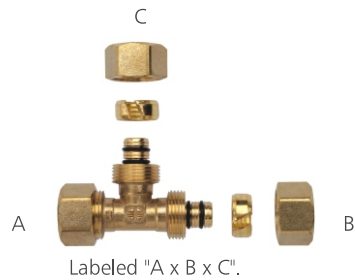
F1 drop ear elbows make 90° connections between PEX/AL/PEX pipes and female NPT threads and secure the tubing.



Specification	pcs/ctn
F1-L1/2*1/2F(Z)IA	112

Tees

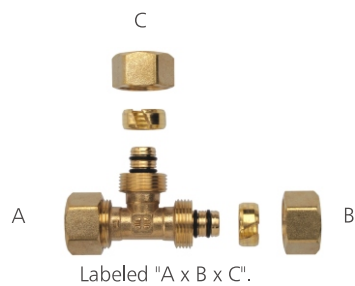
F1 tees make directional connections for PEX/AL/PEX pipes in size indicated.



Specification	pcs/ctn
F1-T1/2*1/2*1/2 A	96
F1-T3/4*3/4*3/4 A	48
F1-T1*1*1 A	36

Reducing Tees

F1 reducing tees make directional connections for PEX/AL/PEX pipes in size indicated.



Specification	pcs/ctn
F1-T3/4*3/4*1/2 A	56
F1-T1*1*1/2A	48
F1-T1*1*5/8 A	44
F1-T1*1*3/4 A	44

Male Sweat Adapters

F1 male sweat adapters connect PEX/AL/PEX pipes to copper pipes in size indicated.



Specification	pcs/ctn
F1-S3/8*1/2 CU A	320
F1-S1/2*1/2 CU A	320
F1-S5/8*1/2 CU A	192
F1-S5/8*3/4 CU A	192
F1-S3/4*3/4 CU A	144
F1-S1*1 CU A	80

Female Sweat Adapters

F1 female sweat adapters connect PEX/AL/PEX pipes to copper pipes in size indicated.



Specification	pcs/ctn
F1-S3/8*1/2 CUF A	400
F1-S1/2*1/2 CUF A	320
F1-S1/2*3/4 CUF A	192
F1-S5/8*3/4 CUF A	192
F1-S3/4*3/4 CUF A	160
F1-S1*1 CUF A	80

Male Sweat Elbows

F1 male sweat elbows make 90° connections between PEX/AL/PEX pipes and copper pipes in size indicated.



Specification	pcs/ctn
F1-L1/2*3/4 CU A	120
F1-L3/4*3/4 CUA	96

Female Sweat Elbows

F1 female sweat elbows make 90° connections between PEX/AL/PEX pipes and copper pipes in size indicated.



Specification	pcs/ctn
F1-L1/2*3/4 CUF A	144
F1-L5/8*3/4 CUFA	160
F1-L3/4*3/4 CUFA	96

Plugs

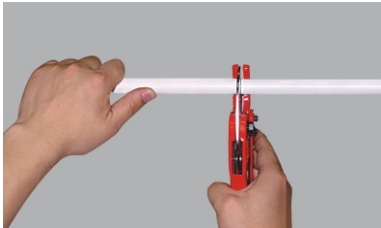
F1 plugs terminate PEX/AL/PEX pipes temporarily or permanently.



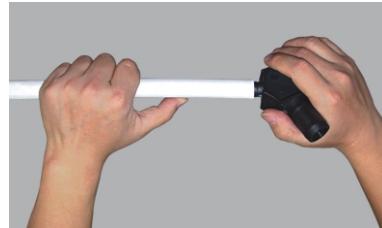
Specification	pcs/ctn
F1-D1/2A	384
F1-D5/8A	288
F1-D1A	96

F1 Installation Instruction

F1 Installation Instruction for size from 3/8"-1"



1. Cut Rifeng pipe at right-angles using a pipe cutter.



2. Round and bevel the endholes and make a no-less-than-2-minimeter incline.



3. Choose the right size fitting according to the pipe, put the nut over the pipe, slide the compression ring over the pipe, make sure the mouth of the nut and the pipe faces the same direction.



4. Push the inserts into the pipe up to the shoulder; take care not to damage the O-ring.



5. Use a spanner to tighten it up completely.



F5b Press Fittings

F5b DZR Press Fittings

The patented Rifeng F5 press fitting is an innovative fitting, which is developed according to the international advanced technology, and has been the mainstream fitting in Europe and USA.

Unique structure:

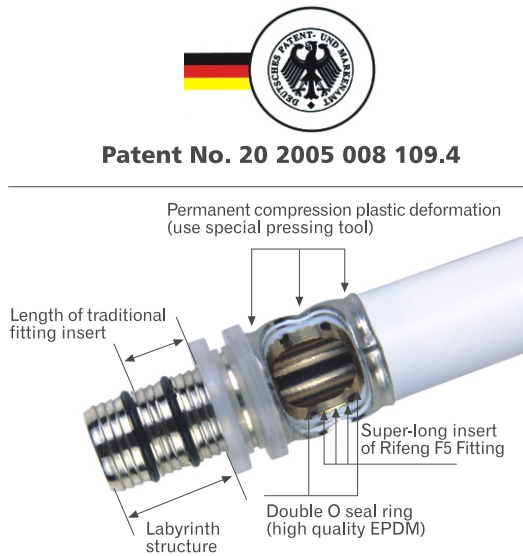
- 1. Two O-rings placed on the fitting insert.
- 2. Three annular grooves on the three-step-labyrinth structure inset.
- 3. Perfect sealing performance.

High quality sealing material:

The material of Rifeng F5 fitting O-rings is EPDM, which has excellent specialty of anti-aging, well- rebound and long lifetime performance. It ensures no leaking in the piping system for long-term use.

Secure Connecting way:

The safe and stabile connecting lies on the permanent compression plastic deformation of the stainless steel sleeve by using the special pressing tool to complete the connecting correctly.



Standard brass components have been accepted universally in water distribution. However, they can experience a severe form of corrosion known as dezincification when they are exposed to particular combinations of pH and concentrations of chlorides. In order to avoid such a problem, we replaced the raw materials(C37700 brass) of press fittings with dezincification resistant brass alloy(DZR brass), which contains a certain amount of inhibiting agent to minimize dezincification damage.F5b DZR brass press fittings are listed by NSF and IAPMO to be in compliant to the Uniform Plumbing CodeThey are manufactured according to ASTM F1281-2005 standard and CSA137.10 standard.

F5b DZR Brass Couplings

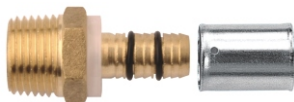
F5b DZR brass couplings make connection between PEX/AL/PEX pipes in size indicated.



Specification	pcs/ctn
F5b-S1/2*1/2 IIA	320
F5b-S5/8*5/8 IIA	224
F5b-S3/4*3/4 IIA	120
F5b-S1*1 IIA	90
F5b-S3/4*1/2 IIA	120
F5b-S1*3/4 IIA	80

F5b DZR Brass Male NPT Adapters

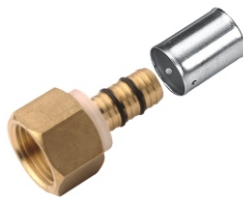
F5b DZR brass male NPT adapters connect PEX/AL/PEX pipes to male NPT threads.



Specification	pcs/ctn
F5b-S1/2*1/2M IIA	360
F5b-S1/2*3/4M IIA	200
F5b-S3/4*3/4M IIA	120
F5b-S1*1M IIA	96

F5b DZR Brass Female NPT Adapters

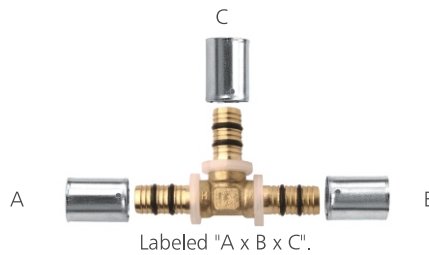
F5b DZR brass female NPT adapters connect PEX/AL/PEX pipes to female NPT threads.



Specification	pcs/ctn
F5b-S1/2*1/2F IIA	280
F5b-S5/8*3/4F IIA	160
F5b-S3/4*3/4F IIA	120
F5b-S1*1F IIA	96

F5b DZR Brass Tees

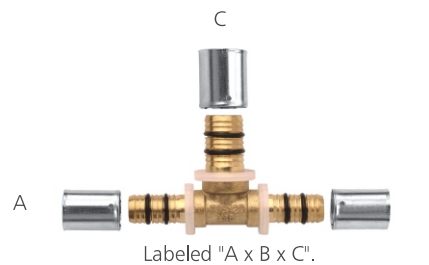
F5b DZR brass tees make directional connections for PEX/AL/PEX pipes in size indicated.



Specification	pcs/ctn
F5b-T1/2*1/2*1/2 IIA	120
F5b-T3/4*3/4*3/4 IIA	64
F5b-T1*1*1 IIA	30

F5b DZR Brass Reducing Tees

F5b DZR brass tees make directional connections for PEX/AL/PEX pipes in size indicated.



Specification	pcs/ctn
F5b-T1/2*1/2*3/4 IIA	96
F5b-T3/4*3/4*1/2 IIA	70
F5b-T3/4*1/2*1/2 IIA	96
F5b-T1*1*1/2 IIA	48
F5b-T1*1*3/4 IIA	36

F5b DZR Brass Elbows

F5b DZR brass elbows make 90° connections between PEX/AL/PEX pipes in size indicated.

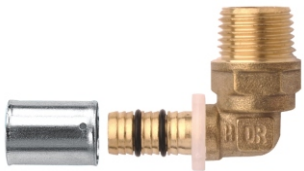


Specification	pcs/ctn
F5b-L1/2*1/2 IIA	192
F5b-L5/8*5/8 IIA	144
F5b-L3/4*3/4 IIA	80
F5b-L1*1 IIA	45

F5b DZR Press Fittings

F5b DZR Brass Male NPT Elbows

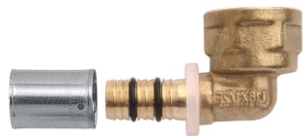
F5b DZR brass male NPT elbows make 90° connections between PEX/AL/PEX pipes and male NPT threads.



Specification	pcs/ctn
F5b-L1/2*1/2M IIA	192
F5b-L1/2*3/4M IIA	120

F5b DZR Brass Female NPT Elbows

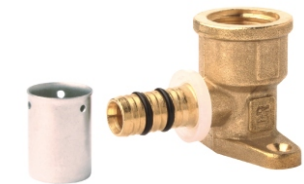
F5b DZR brass female NPT elbows make 90° connections between PEX/AL/PEX pipes and female NPT threads.



Specification	pcs/ctn
F5b-L1/2*1/2F IIA	200
F5b-L1/2*3/4F IIA	120

F5b DZR Brass Drop Ear Elbows

F5b DZR Brass drop ear elbows make 90° connections between PEX/AL/PEX pipes and female NPT threads and secure the tubing.



Specification	pcs/ctn
F5b-L1/2*1/2F(Z) IA	112
F5b-L3/4*3/4F(Z) IA	80

F5b DZR Brass Plugs

F5b DZR Brass plugs terminate PEX/AL/PEX pipes temporarily or permanently.



Specification	pcs/ctn
F5b-D1/2 IIA	600
F5b-D3/4 IIA	192
F5b-D1 IIA	128

F5b DZR Brass Male Sweat Adapters

F5b DZR Brass male sweat adapters connect PEX/AL/PEX pipes to copper pipes in size indicated.



Specification	pcs/ctn
F5b-S1/2*1/2 CU IIA	384
F5b-S1/2*3/4 CU IIA	288
F5b-S5/8*3/4 CU IIA	288
F5b-S3/4*3/4 CU IIA	120
F5b-S1*3/4 CU IIA	96
F5b-S1*1 CU IIA	96

F5b DZR Brass Female Sweat Adapters

F5b DZR Brass female sweat adapters connect PEX/AL/PEX pipes to copper pipes in size indicated.



Specification	pcs/ctn
F5b-S1/2*3/4 CUF IIA	288
F5b-S1/2*1/2 CUF IIA	384
F5b-S5/8*3/4 CUF IIA	288
F5b-S3/4*1/2 CUF IIA	144
F5b-S3/4*3/4 CUF IIA	120
F5b-S1*1 CUF IIA	96

DZR Brass Male Sweat Elbows

F5b DZR Brass male sweat elbows connect PEX/AL/PEX pipes to copper pipes in size indicated.



Specification	pcs/ctn
F5b-L1/2*3/4 CU IIA	192
F5b-L5/8*3/4 CU IIA	120
F5b-L3/4*3/4 CU IIA	96

DZR Brass Female Sweat Elbows

F5b DZR Brass female sweat elbows connect PEX/AL/PEX pipes to copper pipes in size indicated.



Specification	pcs/ctn
F5b-L1/2*3/4 CUF IIA	192
F5b-L5/8*3/4 CUF IIA	120
F5b-L3/4*3/4 CUF IIA	96

F5b DZR Brass Tub/Shower Elbows

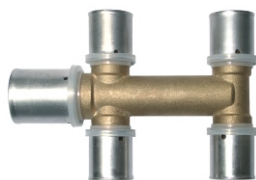
F5b DZR brass tub/shower elbows make connections for PEX/AL/PEX pipes to shower arms or tub nipples.



Specification	pcs/ctn
F5b-L1/2*3/4(1/2F NPT)	60

DZR Brass Mini-manifolds

DZR Brass Mini-manifolds make directional connections for PEX/AL/PEX pipes.



Specification	pcs/ctn
F5b-5/8-5/8-5/8-5/8-5/8	
F5b-3/4-5/8-1/2-1/2-1/2	
F5b-3/4-5/8-5/8-5/8-5/8	

Tools

Pipe cutter

Pipe cutters offer an accurate and easy cutting of PEX/AL/PEX pipes.



Specification	pcs/ctn
GJ III	50

External Bending spring

External bending springs are fitted over PEX/AL/PEX pipes for bending.



Specification	pcs/ctn
WH-1/2 II	36
WH-5/8 II	24
WH-3/4 II	12
WH-1 II	6

Internal Bending spring

Internal bendign springs are inserted in PEX/AL/PEX pipes for bending



Specification	pcs/ctn
WH-3/8	240
WH-1/2	150
WH-5/8	90
WH-3/4	54
WH-1	24

Reamer

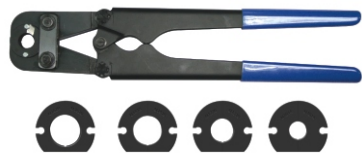
Reamers bevel and round PEX/AL/PEX pipes of sizes no bigger than 1" in F5b DZR brass press fitting or F1 compression fitting installation.



Specification	pcs/ctn
ZYD2-3/8-1/2-3/4(05)	100
ZYD2-1/2-3/4-1(05)	100

Manual Pressing Clamp

Pressing clamps are suit for making quick connections on 1/2" and 5/8".



Specification	pcs/ctn
SYQ3-14-20	1

Module for Manual Pressing Clamp

SYQ3-1/2	224
SYQ3-5/8	224

Adjustable Lengthened Mannual Pressing Tool

The handles of the lengthened mannual pressing tool are adjustable according to customer need. This tool is suitable for making connections from 1/2" to 1".



Specification	pcs/ctn
SYQ14-32B	1

Module for Manual Pressing Clamp

YYQB-1/2 II	
YYQB-5/8 II	
YYQB-3/4 II	
YYQB-1 II	

F5 Installation Instruction

F5 Installation Instruction for size from 1/2"-1"

1. Preparation for Pipe and fitting



Step 1: Pipe cutting

Cut the pipe vertically and precisely with a pipe cutter.
Attention: Make sure the cross section is vertical and smooth when cutting the pipe.



Step 2: Rounding and beveling

Round and bevel the end holes with the Rifeng reamer (Plastic reamer or T-reamer).

Attention: The pipe end hole must be beveled correctly in case of damage on the O-rings during fitting installation and also to let the fitting insert slide into the pipe easily.

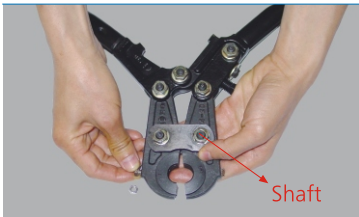


Step 3: Inserting

Choose the right size sleeved-fitting for the pipe(normally for sizes from 3/8" through 1",the fittings were already integrated with sleeves),then aim the pipe end at the ring-shape hole of the fitting integrated with sleeve(as fitting insert and integrated sleeve come into a ring-shape) and slide the fitting insert into the pipe until it reaches the plastic block. Check the inserting depth by looking through the inspection holes on the sleeve shoulder to ensure that the pipe is completely inserted.

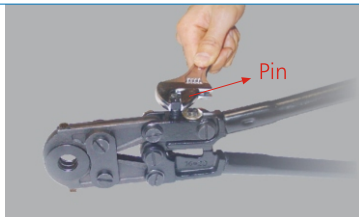
Attention: Slide the fitting insert into the pipe until the pipe end tightly reaches the block on the fitting. Otherwise it will decrease the effect of the pressing.

2. Preparation for pressing



Step 1: Installing jaw on to the Tool.

Open the handles, then loose the nuts, which are on the jaw-reception groove by a wrench. Placing the jaw into jaw-reception groove, make sure the two marked sides with number are on the same plane, and then tighten the nuts back.



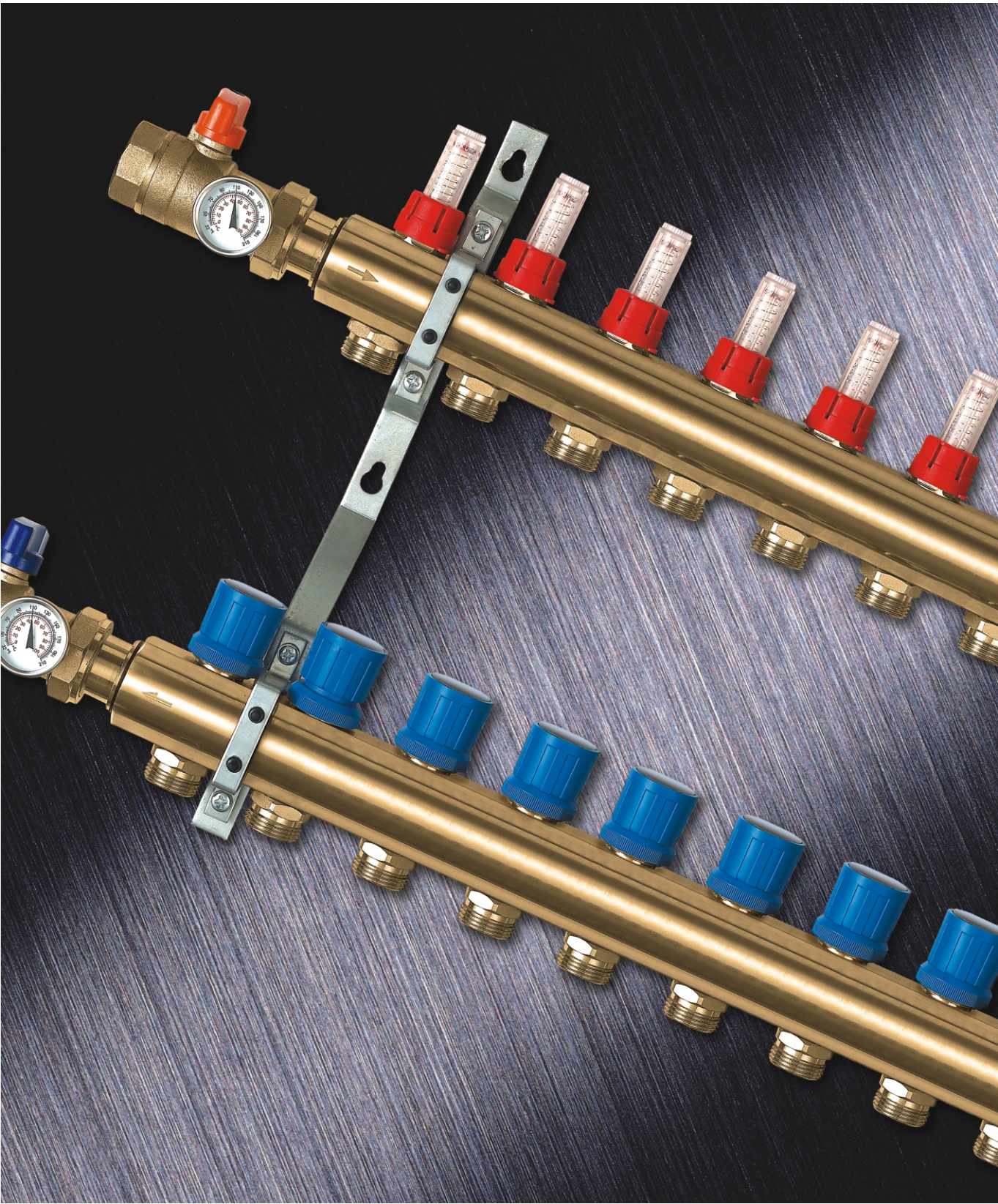
Step 2: Adjusting the Pressing Tool.

After jaw inserting is finished, close the handles until the two cross-sections are totally closed. Tighten the adjusting screw until the jaw is completely close and cannot be shaken by hand. Tightening signal is marked on the tool.

Step 3. Pressing



Open the Pressing Tool and position the tool right onto the sleeve. Close the handles until the two touch points on the handles touch each other. While the jaw is completely closed, the handles will be self-locked. Opening the handles and remove the pressing tool from the fitting and installation is accomplished.



Manifolds

Manifolds for Water Supply

Rifeng manifold heating/plumbing system is a new method for residential water distribution in hte home building industry. Manifolds are the controlling centers for hot and cold water that feed flexible tubing to individual fixtures.The systems with manifolds permit several fixtures to be used simultaneously without dramatic pressure or temperature drops. Additionally,there are so fewer hidden fittings required that the systems become more secure and leak-free.

Brass Manifolds with Gate Valves

Brass manifolds with gate valves are nickel plated. Valves allow each circuit to be isolated.Manifolds can be jointed to make the required number of ports.They can be connected with PEX/AL/PEX pipes or PEX pipes by connector cores.

Specification	pcs/ctn
FS4-3/4-1/2*2	60
FS4-3/4-1/2*3	48
FS4-3/4-1/2*4	30
FS4-1-1/2*2	60
FS4-1-1/2*3	36
FS4-1-1/2*4	24



Brass Manifolds with Ball Valves

Brass manifolds with ball valves are nickel plated. Valves allow each circuit to be isolated.Manifolds can be jointed to make the required number of ports.They can be connected with PEX/AL/PEX pipes or PEX pipes by connector cores.

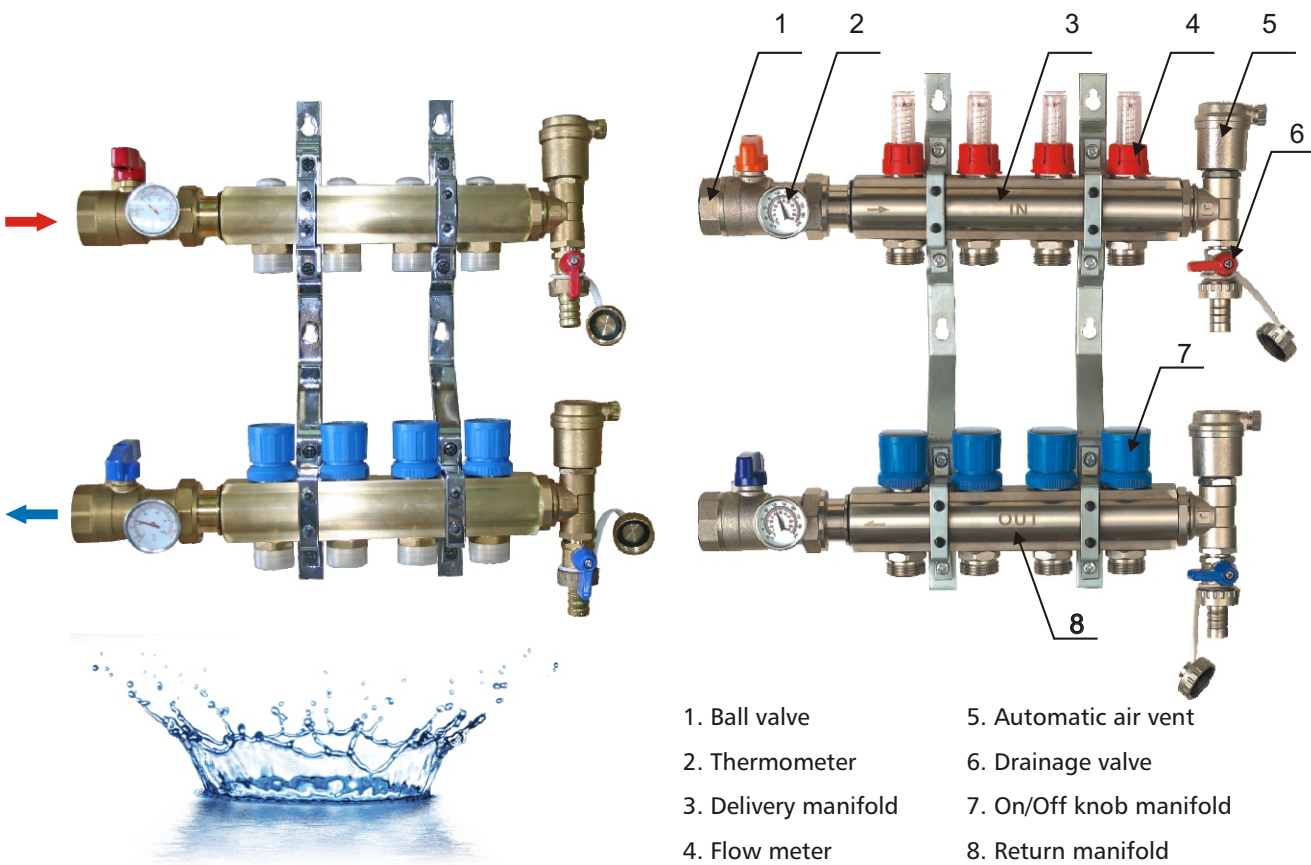
Specification	pcs/ctn
FS5-3/4-1/2*2	60
FS5-3/4-1/2*3	48
FS5-3/4-1/2*4	30
FS5-1-3/4*2	42
FS5-1-3/4*3	24
FS5-1-3/4*4	18



Manifolds-FN5C Manifolds

FN5C Manifolds-A New Generation

- a. Automatic air vent
- b. The connection between the air vent and the main body of manifold is demountable
- c. More shining appearance because of new polish technics
- d. Direction arrows are showed on the main body to indicate the delivery manifold and return manifold
- e. The color of flow gauge is changed to red to indicate the delivery side
- f. The color of switch knob is changed to blue to indicate the return side



- 1. Ball valve
- 2. Thermometer
- 3. Delivery manifold
- 4. Flow meter
- 5. Automatic air vent
- 6. Drainage valve
- 7. On/Off knob manifold
- 8. Return manifold

1. Standard: CJ/T 251-2007

2. Material :

Manifold Body: HPb59-1

Port Connections: HPb59-1

Seals: EPDM

Flowmeter: ABS, Nylon, PC, Stainless Steel

3. Techincal Data:

Applicable medium: hot and cold water, mixture of water and anti-freeze additive

Nominal pressure: 1.0MPa

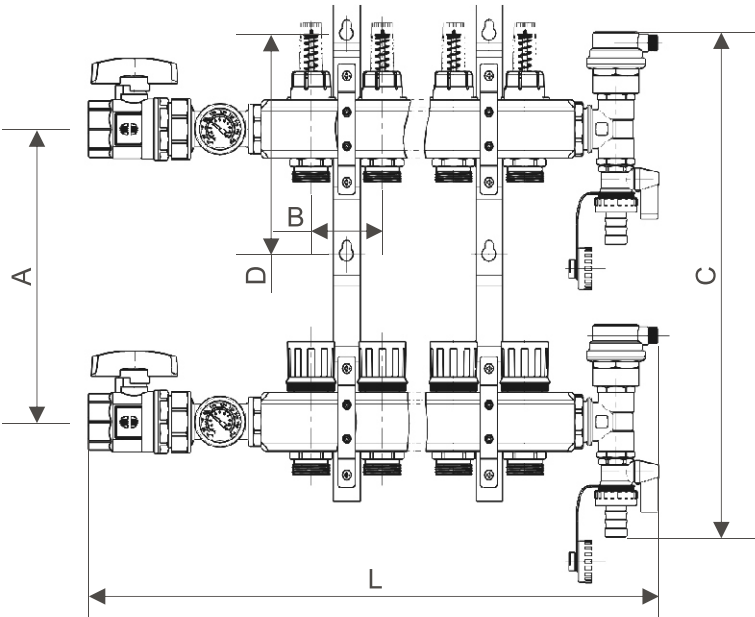
Temperature of Applicable medium: 0-85℃

Max Temperature: 90℃

Flow adjust range: 0-5L/min, Kvs=1.10

Main inlet/outlet size: 1"

Sub inlet/outlet size: 3/4"



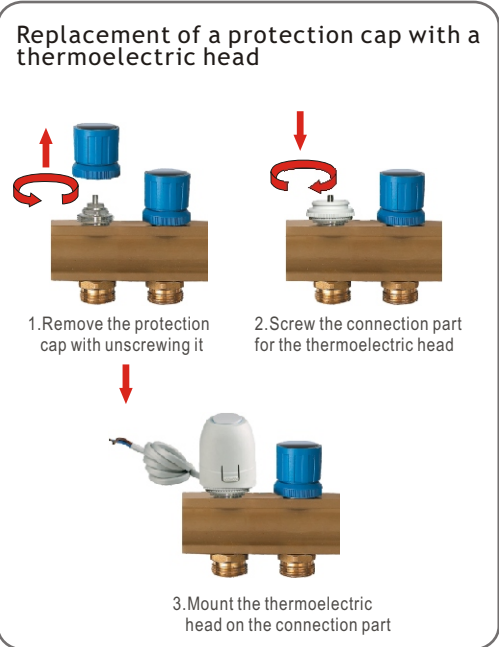
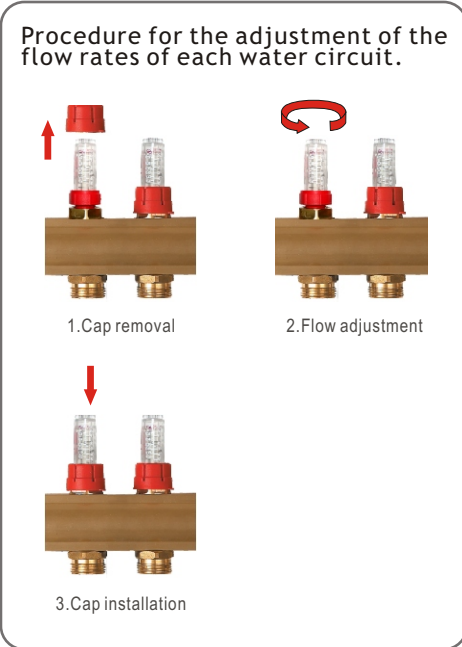
A	B	C	D
206	50	375	155

L=50*n+20+121.5+58.5										
300	350	400	450	500	550	600	650	700	750	800

CODE	SIZE	WAYS	CONNECTIONS
FN5C-1F-3/4*2(Cu)	1"G	2	3/4"x18
FN5C-1F-3/4*3(Cu)	1"G	3	3/4"x18
FN5C-1F-3/4*4(Cu)	1"G	4	3/4"x18
FN5C-1F-3/4*5(Cu)	1"G	5	3/4"x18
FN5C-1F-3/4*6(Cu)	1"G	6	3/4"x18
FN5C-1F-3/4*7(Cu)	1"G	7	3/4"x18
FN5C-1F-3/4*8(Cu)	1"G	8	3/4"x18
FN5C-1F-3/4*9(Cu)	1"G	9	3/4"x18
FN5C-1F-3/4*10(Cu)	1"G	10	3/4"x18
FN5C-1F-3/4*11(Cu)	1"G	11	3/4"x18
FN5C-1F-3/4*12(Cu)	1"G	12	3/4"x18

CODE	SIZE	WAYS	CONNECTIONS
FN5C-1F-3/4*2(Ni)	1"G	2	3/4"x18
FN5C-1F-3/4*3(Ni)	1"G	3	3/4"x18
FN5C-1F-3/4*4(Ni)	1"G	4	3/4"x18
FN5C-1F-3/4*5(Ni)	1"G	5	3/4"x18
FN5C-1F-3/4*6(Ni)	1"G	6	3/4"x18
FN5C-1F-3/4*7(Ni)	1"G	7	3/4"x18
FN5C-1F-3/4*8(Ni)	1"G	8	3/4"x18
FN5C-1F-3/4*9(Ni)	1"G	9	3/4"x18
FN5C-1F-3/4*10(Ni)	1"G	10	3/4"x18
FN5C-1F-3/4*11(Ni)	1"G	11	3/4"x18
FN5C-1F-3/4*12(Ni)	1"G	12	3/4"x18

The FN5C manifolds made of brass HPb59-1, with flow meters for the adjustment of the flow rates of each water circuit.

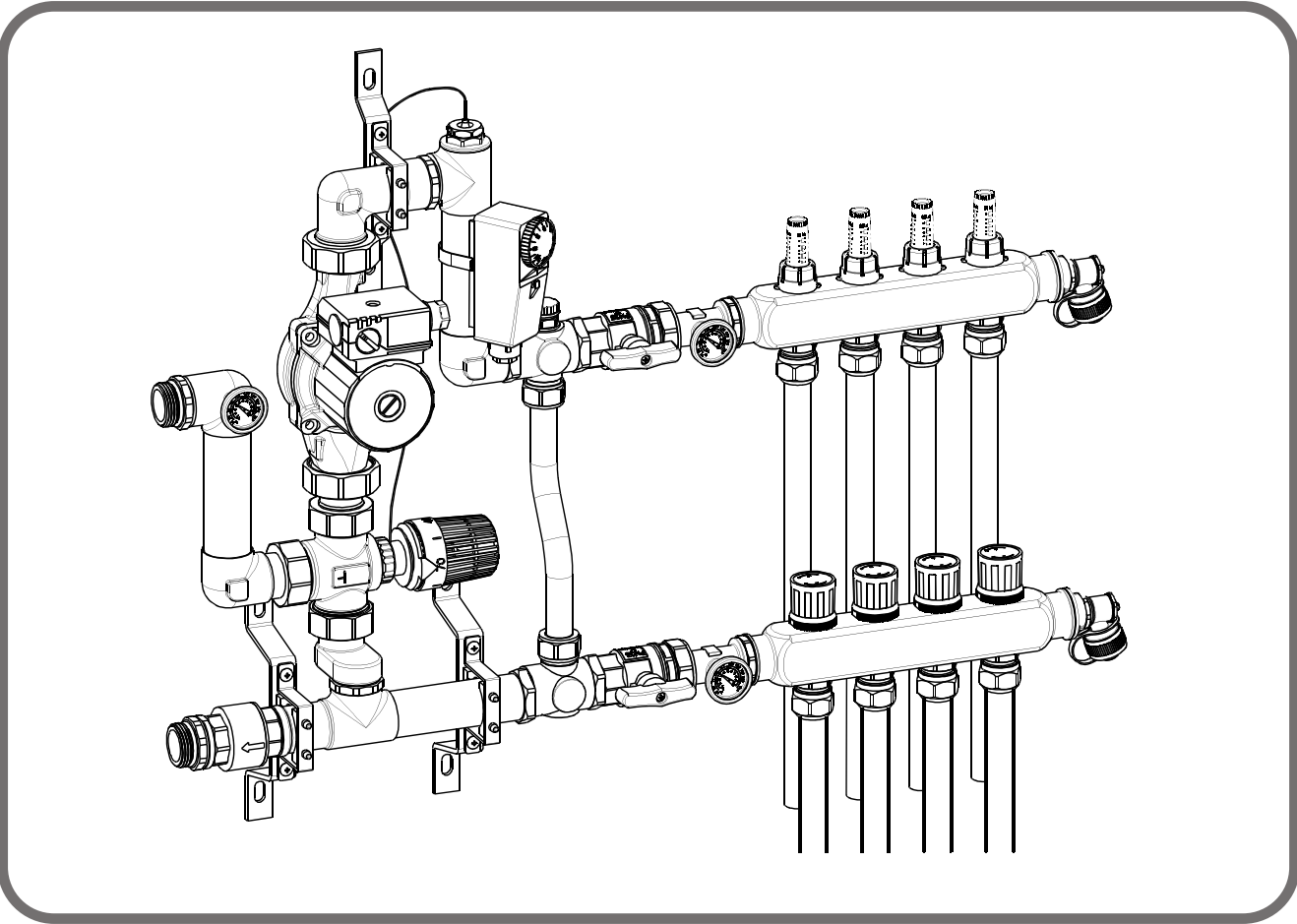


The thermoelectric heads are mounted on the thermostatic screws of the distribution manifolds, replacing the protection caps. When these actuators are installed, each single radiant circuit can be controlled, and, consequently, the room temperature of each room can be adjusted.

Manifolds-FN15 Manifolds

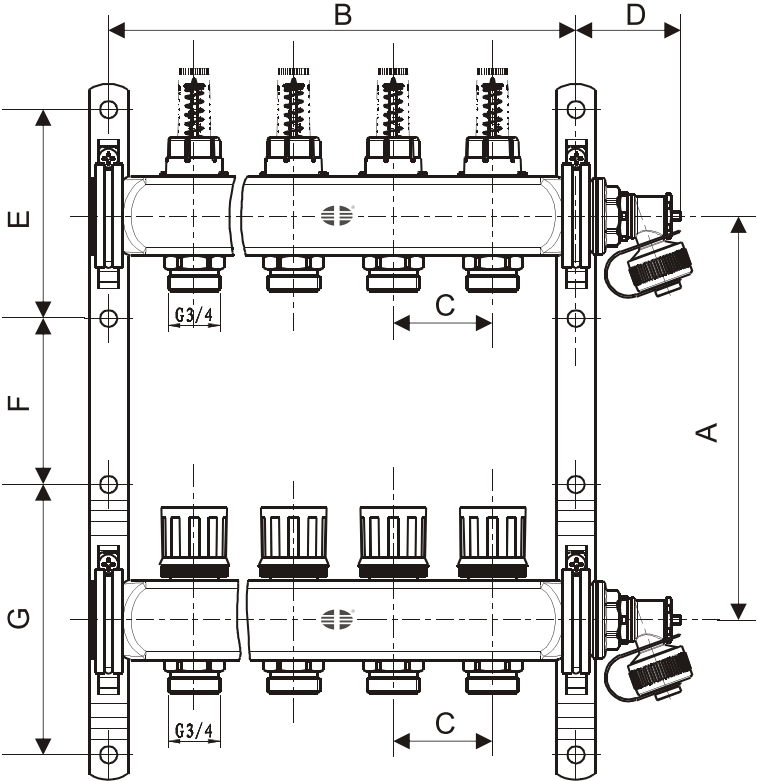
After launching the FN5C Brass Heating Manifold last year, Rifeng develops a new series heating manifold-- the FN15 Stainless Steel Heating Manifold these days.

FN15 Stainless Steel manifolds are sold in 1 to 12-branch pairs for easy assembly in the field. Manifold sections are easily connected together, if more circuits are required. Simply thread two sections together with the use of a manifold coupling and tighten. Make sure the gasket is installed prior to assembly.



Features & Benefits

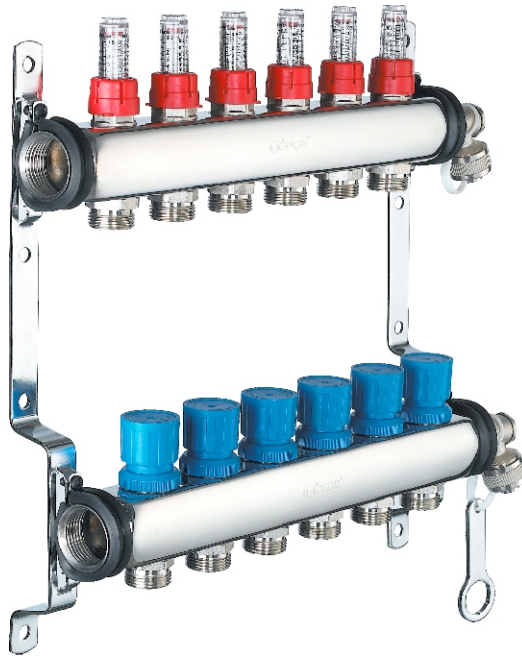
- Flexible, modular and singular design system
- Easy-to-assemble construction
- Precise flow control and balancing
- Fittings for both PEX and Multilayer Pipe
- Control for the dominant heating systems like hydronic floor heating, fan coil heating or Baseboard heating
- No sealant, no teflon



A	B	C	D	E	F	G
203	$L=50*n+32$	50	58	105	84	136

- Technical Data:
- 1. Standard: CJ/T 251-2007, GB/T1220-92
 - 2. Material
Mainfold body: 0Cr18Ni9(SUS304) Port connection: HPb59-1
Sealed: EPDM
Flowmeter: ABS, Nylon, PC, Stainless
 - 3. Technical data:
Applicable medium: hot and cold water, mixture of water and anti-freeze additive
Nominal pressure: 1.0MP
Applicable medium temperature: 0-85℃ Max temperature: 90℃
Flow adjust range: 0-5L/min, Kvs=1.10
Main in/outlet size: 1"
Sub in/outlet size: 3/4"
Sub in/outlet size: 50mm
 - 4. Accessories: Ball valve, Drainage, Drainage (manual air vent)

CODE	SIZE	WAYS	CONNECTIONS
FN15-1F-3/4*2	1"G	2	3/4"
FN15-1F-3/4*3	1"G	3	3/4"
FN15-1F-3/4*4	1"G	4	3/4"
FN15-1F-3/4*5	1"G	5	3/4"
FN15-1F-3/4*6	1"G	6	3/4"
FN15-1F-3/4*7	1"G	7	3/4"
FN15-1F-3/4*8	1"G	8	3/4"
FN15-1F-3/4*9	1"G	9	3/4"
FN15-1F-3/4*10	1"G	10	3/4"
FN15-1F-3/4*11	1"G	11	3/4"
FN15-1F-3/4*12	1"G	12	3/4"



- Test:
- 1. Air tightness test, under 1.0MPa pressure
 - 2. Mainfold screw torque force test: 125N
 - 3. Static internal pressure test: 1.1MPa, 90℃, 1hour
 - 4. Blasting test: 2.4MPa, 23℃, 2min

Accessories for manifolds

Connector cores for PEX/AL/PEX pipes with double o-rings (brass/nickeled)

Connector cores make connections for manifolds to PEX/AL/PEX Pipes.



Specification	pcs/ctn
F1-C3/8*3/4 A	384
F1-C1/2*1/2 A	576
F1-C1/2*3/4 A	384
F1-C5/8*3/4 A	384
F1-C3/4*1 A	192

Connector cores for PEX pipes(brass/nickeled)

Connector cores make connections for manifolds to PEX Pipes.



Specification	pcs/ctn
PF1-C3/8*3/4	384
PF1-C1/2*1/2	576
PF1-C1/2*3/4	336
PF1-C3/4*1	192

Connector cores for PEX/AL/PEX pipes

Connector cores make connections for manifolds to PEX/AL/PEX Pipes.



Specification	pcs/ctn
F5-C1/2*1/2 IIA	336
F5-C1/2*3/4 IIA	264
F5-C5/8*3/4 *A	192

Male cap for manifold(brass/nickeled)

Male end caps close off the loop connections to ensure a proper seal.



Specification	pcs/ctn
D1/2"	528
D3/4"	432
D1"	280

Female cap for manifold(brass/nickeled)

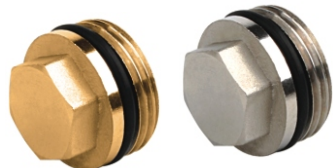
Female end caps close off the loop connections to ensure a proper seal.



Specification	pcs/ctn
D1/2"F	528
D3/4"F	384
D1"F	192
D1/2"F(nickeled)	528
D3/4"F(nickeled)	384
D1"F(nickeled)	192

End cap for manifolds with o-ring(brass/nickeled)

End caps close off the loop connections to ensure a proper seal.



Specification	pcs/ctn
D1/2"A	840
D3/4"A	432
D1"A	280

Ball Valve for Manifolds

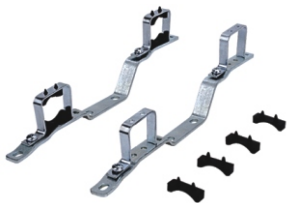
Ball valves control the tubing lines separatly. They open or shut in a 1/4 turn.



Specification	pcs/ctn
1/2	96
5/8	96

Bracket for Bar Manifolds

Brankets provide a secure fastening to manifold bars.



Specification	pcs/ctn
FNJ-11/4	10

Electrothermal Actuator

Eletrothermal actuators are designed to use with unferfloor heating manifolds for individual loop control.



Specification	pcs/ctn
24volt 2watt NC (M30*1.5)	100



Heating Valves

Thermostatic Valve for Return Manifold

Thermostatic valve for return manifold is to control the return flow temperature in a underfloor heating system, thus the temperature of the whole system is controlled and satble. It can be mounted on the end of every return loops or on the water inlet of manifolds. The actuators will automatically adjust the return flow of water out of a radiator according to the set temperature, thus create a a warm and comfortable living and working environment for the users. This valve can save 20%-30% energy in daily use.



DN15



DN25

Rifeng thermostatic valve for Underfloor heating is installed at the end of the pipe branch or for the underfloor heating manifolds connection, and can save 20%-30% energy in daily use. The valves can control the underfloor heating backwater flow automatically without external force once you setting the initial temperature.

Technical data

Temperature range: 6°C-28°C
Highest working pressure: 16bar
Highest working temperature: 120°C
KV: 1 m³/h
Body: brass(nickled)
Shaft: ABS

Scale	0	1	2	3
temperature	35	40	45	50

Thermostatic mixing valve

For Plumbing System



DN15/DN20

For Heating System



DN25

Rifeng thermostatic mixing valve is specially design for heating systems, like solar heater, electronic water heater and underfloor heating system. The valves can control the proportion of hot and cold water flow indirectly without external force once you setting the mixing water temperature.

Technical data

Mixing water temperature range: 30°C-50°C
Mixing water temperature of delivery: 40°C
Mixing water temperature precision: ±2°C
Hot water temperature range: 55°C-90°C
Cold water temperature range: 5°C-25°C
Working pressure range:0.5-5bar
Highest static pressure : 16bar
Body: brass(nickled)
Shaft: ABS

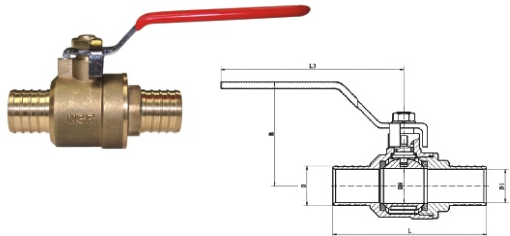


Valves

Crimp x Crimp Ball Valve

Brass ball valves with flat handle

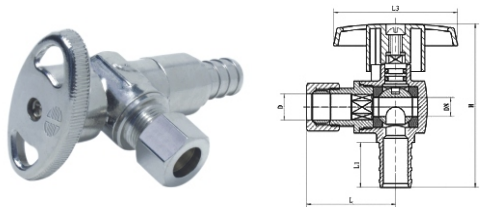
Series AB-CC-021 ball valves are designed for use in PEX piping systems. They feature a quarter-turn, with forge body and flat handle.



Specification	pcs/ctn
Q1a-S1/2PF5*1/2PF5	150
Q1a-S3/4PF5*3/4PF5	100
Q1a-S1PF5*1PF5	60

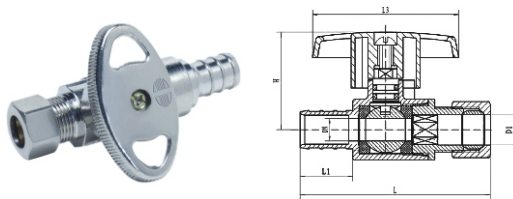
Size	L	L1	L2	L3	H	DN
1/2"	65.5	11.9	9.1	84	40	10
3/4"	69	16.9	13.7	100	53.8	14
1"	84.5	21.7	18.3	100	57	19

1/4 Turn Stops



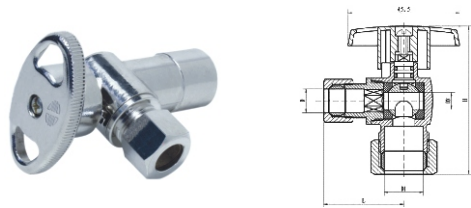
Specification	pcs/ctn
202a QA1/2CF*3/8OD	120
202a QA1/2CF*1/4OD	120

Size	L	D	L1	L3	H	DN
1/2CF*1/4OD	32	6.5	16.5	45.5	60	7
1/2CF*3/8OD	69	9.7	16.5	45.5	60	7



Specification	pcs/ctn
202a QS1/2CF*3/8OD	120
202a QS1/2CF*1/4OD	120

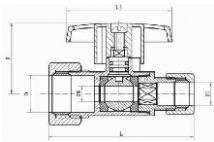

Size	L	L1	L2	L3	H	DN
1/2CF*3/8OD	58.5	16.5	6.5	45.5	30.5	7
1/2CF*3/8OD	59.5	16.5	9.7	45.5	30.5	7



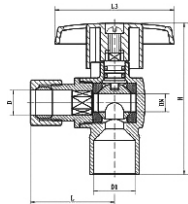

Specification	pcs/ctn
202a QA5/8OD*3/8OD	120

Size	L	D	D1	L3	H	DN
5/8OD*1/4OD	31	6.5	16	45.5	60.5	7
5/8OD*3/8OD	32	9.7	16	45.5	60.5	7

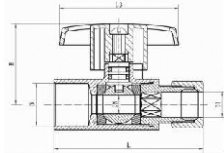

1/4 Turn Stops



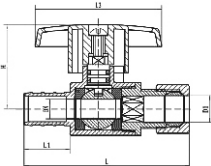

Specification	pcs/ctn					
202a QA1/2CS*3/8OD	120					
Size	L	D	D1	L3	H	DN
5/8OD*1/4OD	61	16	6.5	45.5	30.5	7
5/8OD*3/8OD	62	16	9.7	45.5	30.5	7



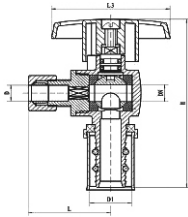

Specification	pcs/ctn					
202a QS5/8OD*3/8OD	120					
Size	L	D	D1	L3	H	DN
1/2CS*1/4OD	31	6.5	16	45.5	58	7
1/2CS*3/8OD	32	9.7	16	45.5	58	7



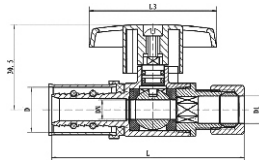

Specification	pcs/ctn					
202a QS1/2CS*3/8OD	120					
Size	L	D	D1	L3	H	DN
1/2CS*1/4OD	55.5	16	6.5	45.5	30.5	7
1/2CS*3/8OD	56.5	16	9.7	45.5	30.5	7



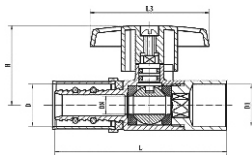

Specification	pcs/ctn					
202a QS1/2CF*1/2CF	120					
Size	L	D	L1	L3	H	DN
1/2CF*1/4OD	32	6.5	16.5	45.5	60	7
1/2CF*3/8OD	33	9.7	16.5	45.5	60	7



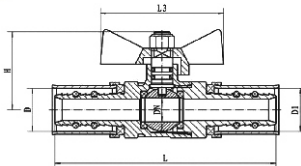

Specification	pcs/ctn					
202b QAF5-1216(05)*3/8OD	120					
202b QAF5-1216(05)*1/4OD	120					
Size	L	D	D1	L3	H	DN
16(05)*1/4OD	32	6.5	16	45.5	69.5	7
16(05)*3/8OD	33	9.7	16	45.5	69.5	7



Specification	pcs/ctn					
202b QSF5-1216(05)*3/8OD	120					
Size	L	D	D1	L3	H	DN
16(05)*1/4OD	68	16	6.5	45.5	30.5	7
16(05)*3/8OD	69	16	9.7	45.5	30.5	7



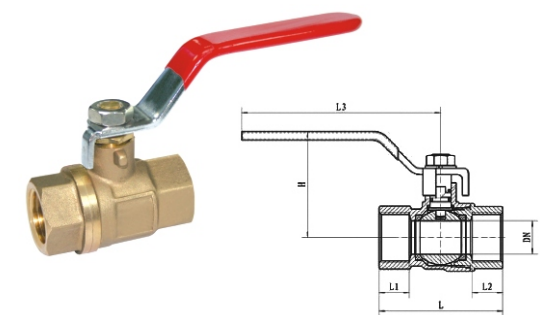
Specification	pcs/ctn					
202b QSF5-1216(05)*1/2CS	120					
Size	L	D	D1	L3	H	DN
16(05)*1/2CS	65.5	16	16	45.5	30.5	7



Specification	pcs/ctn					
202b QF5-1/2(05)*1/2(05)	120					
202b QF5-3/4*3/4	120					
202b QF5-1*1	120					
Size	L	D	L2	L3	H	DN
1014	83	14	14	46	29	9
1216	83	16	16	46	29	9
1418	89.5	18	18	52	36	12
1620	89.5	20	20	52	36	12
2025	107	25	25	58	38	15
2632	111	32	32	58	40.5	19

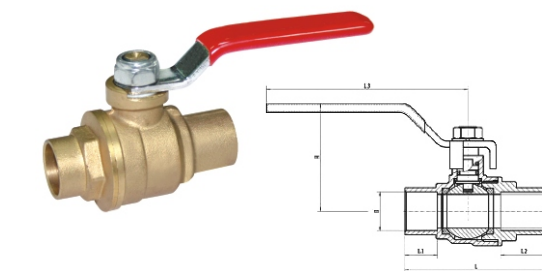
Brass Ball Valves

Full Port
FIP Thread x FIP Thread



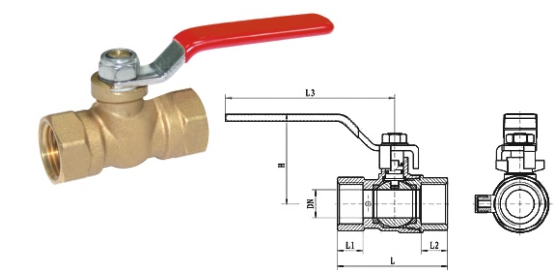
Specification							
203a Q1/8F*1/8F							
203a Q1/4F*1/4F							
203a Q3/8F*3/8F							
203a Q1/2F*1/2 F							
203a Q3/4F*3/4F							
203a Q1F*1F							
203a Q11/4F*11/4F							
203a Q11/2F*11/2 F							
203a Q2F*2F							
Size	L	L1	L2	L3	H	DN	
1/4"	46.15	13	13	80	44.75	8	
3/8"	48.5	13	13	80	44.75	10	
1/2"	57	16	16	99.5	53.25	14.5	
3/4"	64.5	17	17	99.5	56.75	19	
1"	77	20.5	20.5	114	65.35	25	
1-1/4"	93	22.5	22.5	122	74	32	
1-1/2"	100	22.5	22.5	142	91.75	40	
2"	113	23	23	142	91.75	50	

Full Port
Copper Sweatx Copper Sweat



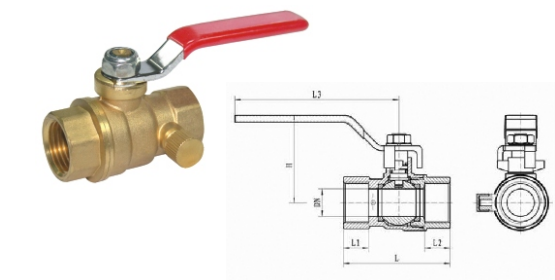
Specification							
203a Q1/2							
203a Q3/4							
203a Q1							
203a Q11/4							
203a Q11/2							
203a Q2							
Size	L	L1	L2	L3	H	DN	
1/2"	57	16	16	99.5	57	15	
3/4"	71	20	20	99.5	60	19	
1"	90	25.5	25.5	114	68.85	25	

Standard Port
FIP Thread x FIP Thread



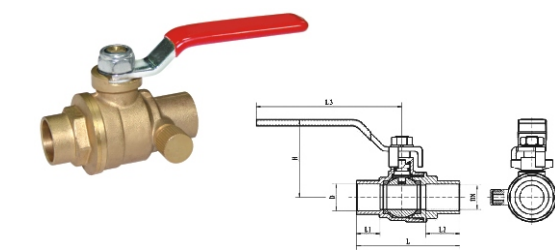
Specification							
203a Q1/8F*1/8F							
203a Q1/4F*1/4F							
203a Q3/8F*3/8F							
203a Q1/2F*1/2 F							
203a Q3/4F*3/4F							
203a Q1F*1F							
203a Q11/4F*11/4F							
203a Q11/2F*11/2 F							
203a Q2F*2F							
Size	L	L1	L2	L3	H	DN	
1/2"	54.55	12	12.8	84	44.95	14	
3/4"	59.5	12	12	84	48.45	19	
1"	67.5	13	13	115.5	54.95	24	

Full Port
FIP Thread x FIP Thread



Specification							
203a Q1/2F*1/2 F							
203a Q3/4F*3/4F							
203a Q1F*1F							
Size	L	L1	L2	L3	H	DN	
1/2"	54.55	12	12.8	84	44.95	14	
3/4"	59.5	12	12	84	48.45	19	
1"	67.5	13	13	115.5	54.95	24	

Full Port
Copper Sweat x Copper Sweat

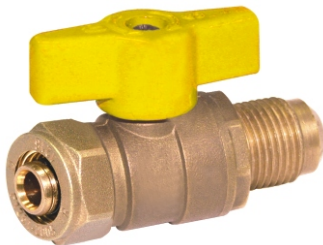


Specification							
203a Q1/2							
203a Q3/4							
203a Q1							
Size	L	L1	L2	L3	H	DN	
1/2"	57	12.7	12.7	84	44.95	14	
3/4"	73.5	19.1	19.1	84	48.45	19	
1"	90.6	23.2	23.2	115.5	54.95	24	

Gas Valves-Ball Style

Series AB-MN-0901 ball valves are designed for residential and commercial applications for low pressure gas. They feature a quarter-turn, and are constructed of heavy duty forged brass and tee handle.

Compression x Flare

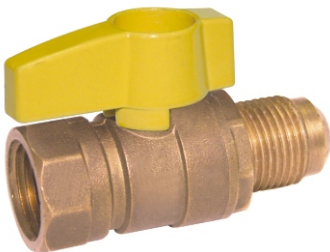


Specification

QF1-1216A*1/2FL

Series AB-MF-0b00 ball valves are designed for residential and commercial applications for low pressure gas. They feature a quarter-turn, and are constructed of heavy duty forged brass and tee handle

Flare x FIP Thread

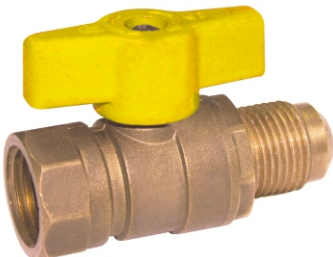


Specification

203QS3/8FL*1/2FIP
203 QS1/2FL*1/2FIP
203 QS5/8FL*3/4FIP

Series AB-MF-0600 ball valves are designed for residential and commercial applications for low pressure gas. They feature a quarter-turn, and are constructed of heavy duty forged brass and tee handle.

Flare x FIP Thread



Specification

203 QS3/8FL*1/2FIP
203 QS1/2FL*1/2FIP
203QS5/8FL*3/4FIP

Series AB-MF-0b01 ball valves in angle configuration are designed for residential and commercial applications for low pressure gas. They feature a quarter-turn, and are constructed of heavy duty forged brass and tee handle.

Flare x FIP Thread



Specification

203 QA3/8FL*1/2FIP
203 QA1/2FL*1/2FIP
203 QA5/8FL*3/4FIP

Series AB-MF-0601 ball valves in angle configuration are designed for residential and commercial applications for low pressure gas. They feature a quarter-turn, and are constructed of heavy duty forged brass and tee handle.

Flare x FIP Thread



Specification

203 QA3/8FL*1/2FIP
203QA1/2FL*1/2FIP
203 QA5/8FL*3/4FIP

Series AB-FF-0600 ball valves are designed for residential and commercial applications for low pressure gas. They feature a quarter-turn, and are constructed of heavy duty forged brass and tee handle.

FIP Thread x FIP Thread



Specification

203 Q1/2F*1/2 F
203 Q3/4F*3/4F

Stop Valves for Radiator Heating Application

All of them are parts of the Radiator Heating System and can be directly connected with Rifeng Multilayer Pipes.

Radiator straight valve with handle	Specification
	1216*1/2 1620*1/2



Radiator straight valve with handle	Specification
	1216*1/2 1620*1/2



Radiator straight valve with handle	Specification
	1216*1/2 1620*1/2



Radiator straight valve with handle	Specification
	1216*1/2 1620*1/2



Global References



Reference-Zijing Apartment
Zijing Apartment--Luxurious apartment in Haikou City, China.
(Using Rifeng PP-R Plumbing Systems)



Reference-Dom Toren Utrecht Nederland
Medistra Hospital is one of the high-class hospitals in Djakarta, Indonesia. (Using Rifeng Multilayer Plumbing Systems)



Reference-South Gate Apartment
The South Gate Apartment, in Melbourne, Australia.
(Using Rifeng Gas System)



Reference-The Radisson Port Elizabeth
The Radisson Port Elizabeth--the first five-star hotel in Port Elizabeth, South Africa. (Using Rifeng Multilayer Piping Systems)

Rifeng Product Application Cautions

Rifeng Products Application Cautions contain cautions for use of Rifeng products. Failure to observe these cautions during using Rifeng products may result in substandard performance of Rifeng products. Rifeng Piping Systems expressly disclaim any responsibility or liability for substandard performance resulting from failure to comply with Rifeng Products Application Cautions.

Warning:

Rifeng pipes must be installed by a licensed professional installer in accordance with Rifeng installation instructions. User is not allowed to replace or repair without authorization.

Rifeng Piping Systems disclaim any responsibility or liability failures due to unauthorized tools, components or fittings application in Rifeng piping system. For authorized tools, components, or fittings ,please follow the Rifeng installation guidelines or consult us at service@rifeng.com or by tel:86-757-82229829.

WHAT IS RIFENG PIPE?

- is a flexible plastic pipe for hot and cold water plumbing applications.
- is installed using insert copper fittings, could be fixed with spanner or crimp tools.*can be used in residential and commercial hot and cold water plumbing applications.
- can be used in hydronic radiant floor applications.
- can be used in gas supply applications.

Note:Different rubber sealing ring is used for Rifeng gas fittings(NBR rubber sealer) from Rifeng water fittings(EPDM rubber sealer).

- can be bent with tools(bending spring or bending tool)in a radius as small as 5 times the outside diameter of the Rifeng PAP pipe,or 6 times the outside diameter of the Rifeng PEX pipe.

CAUTIONS:

RIFENG PIPE IS MADE OF CROSSLINKED OR NON-CROSSLINKED POLYETHYLENE (WITH ALUMINIUM FOR PAP,OR WITHOUT ALUMINIUM FOR PEX), COULD NOT RESIST FOLLOWING CASES. ANY ONE OR MORE OF FOLLOWING CASES COULD CAUSE SEVERE DAMAGE. USER SHOULD AVOID THEM DURING DAILY USE.

- Frozen water in pipe could destroy the pipe. If warm system is shut off during winter, user should take action to prevent water from being frozen in pipe. Recommended methods include using insulation pipes, adding anti-freezer to the water, or expelling water from pipe with compressed air after water pressure test of installation.
- Damage due to undesirable sharp objects or breaks by other external object during using. The Rifeng Pipe outside layer is crosslinked or non-crosslinked polyethylene, it is not so strong to resist sharp objects or crush.
- Damage or wear from excessive operating conditions inconsistent with pressure/temperature ratings that appear on tubing and applicable standards, accident, abuse, misuse, or unauthorized alterations or repair.
- Exposure to harmful, unauthorized or unanticipated chemicals or substances such as pipe thread compounds, putty, mineral or linseed oil products, or corrosive water conditions, is not allowed.
- Exposure to direct flame is not allowed.
- Prolonged exposure to free chlorine concentrations greater than 4 ppm is not allowed.
- Exposure to materials that affect the basic properties of crosslinked or non-crosslinked polyethylene, brass, or copper is not allowed.

Rifeng Piping Systems claim this Rifeng Products Application Cautions does not include all cases possibly met during Rifeng products' services. If users meet any new case or have any questions on above cautions, please contact us by email: service@rifeng.com or by 86-757-82229829.